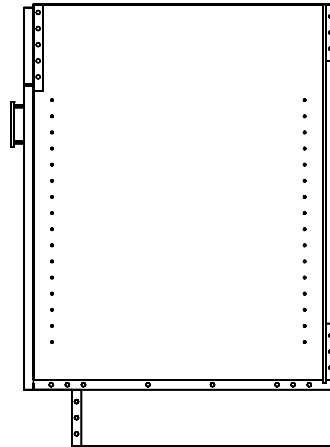




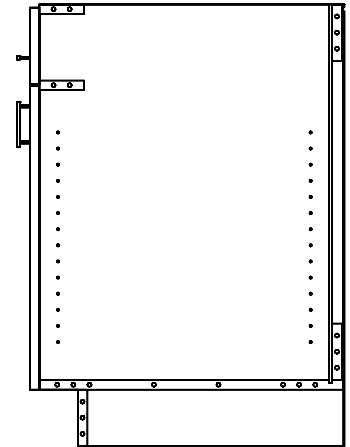
SINK CABINETS

- 1. Sink cabinets have no top stretchers
- 2. Sink cabinets can be ordered with no bottoms
- 3. Cabinets are available with removeable bottoms

False Dwr Construction

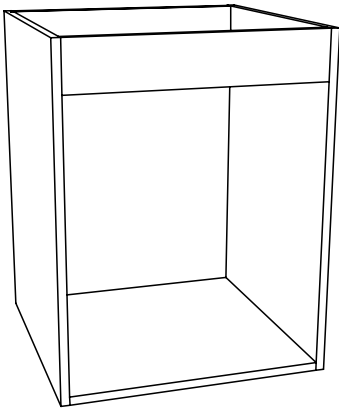


Tilt - Drw Construction



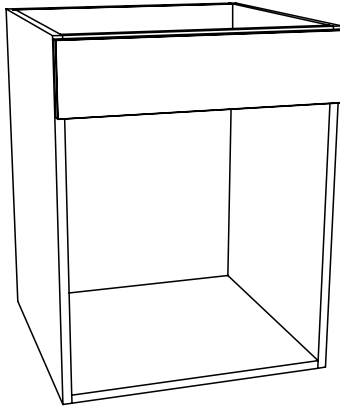
* When Integral Toe is specified, you must specify toe height, and knotch depth

S0D0FD



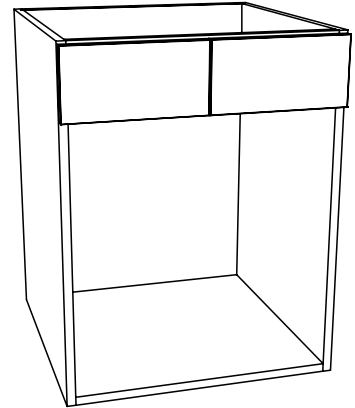
Sink - 0 Door, 0 False Dwr

S0D1FD



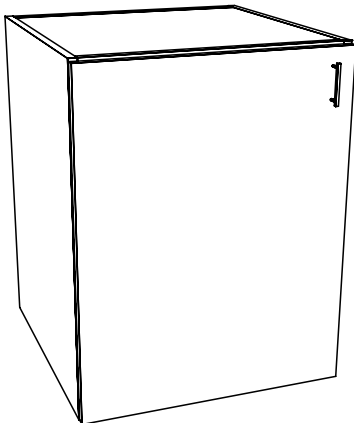
Sink - 0 Door, 1 False Dwr

S0D2FD



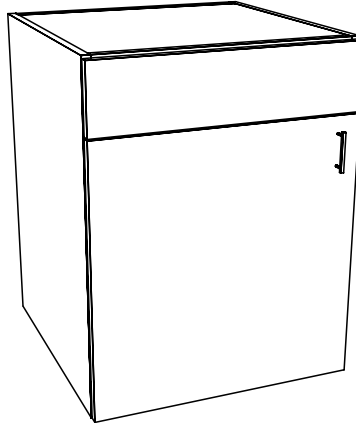
Sink - 0 Door, 2 False Dwr

S1D0FD



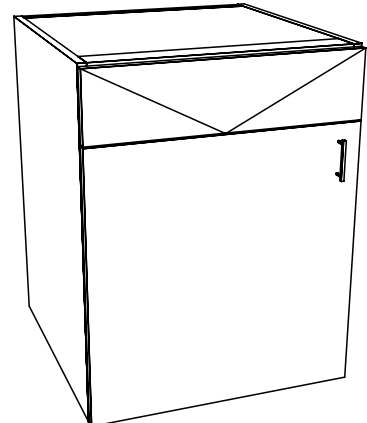
Sink - 1 Door, 0 False Dwr

S1D1FD



Sink - 1 Door, 1 False Dwr

S1D1TD

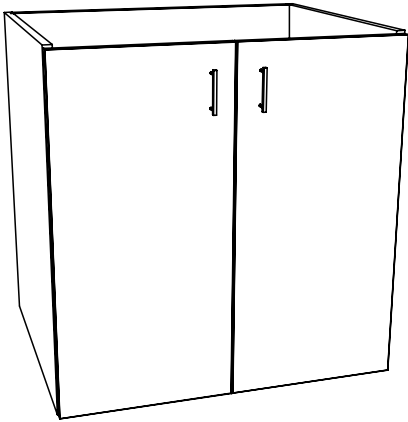


Sink - 1 Door, 1 Tilt Dwr



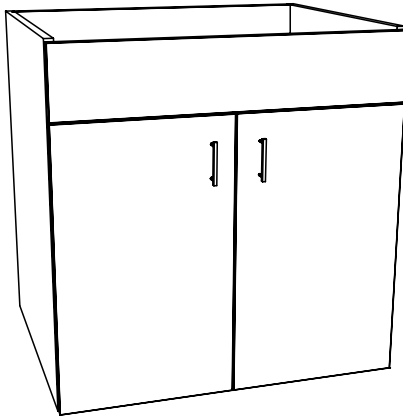
SINK CABINETS

S2D0FD



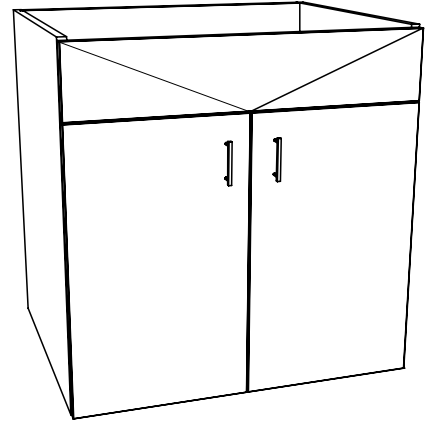
Sink - 2 Door, 0 False Dwr

S2D1FD



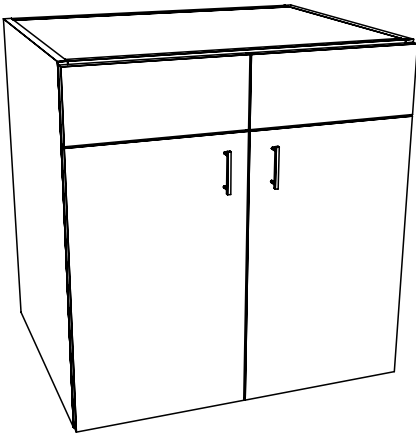
Sink - 2 Door, 1 False Dwr

S2D1TD



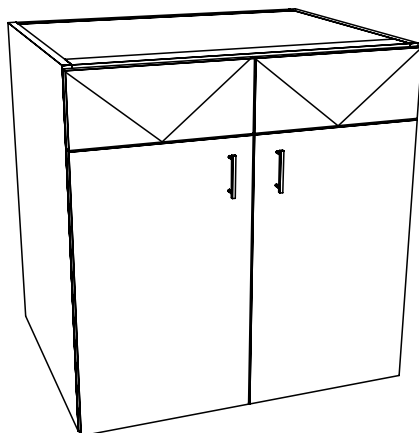
Sink - 2 Door, 1 Tilt Dwr

S2D2FD



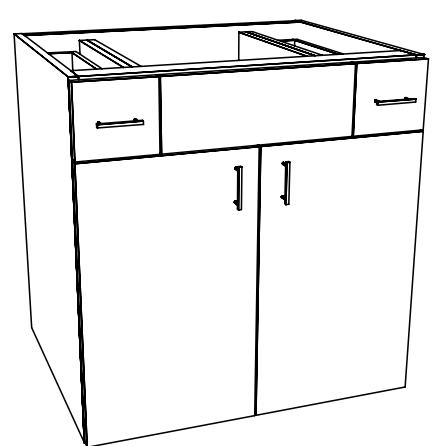
Sink - 2 Door, 2 False Dwr

S2D2TD



Sink - 2 Door, 2 Tilt Dwr

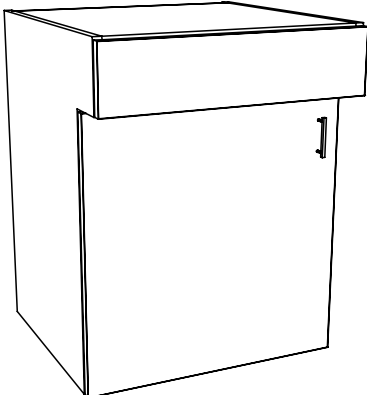
S2D2D1FD



Sink - 2 Door, 2 Dwr, 1 False Dwr

S1D1FDEXT

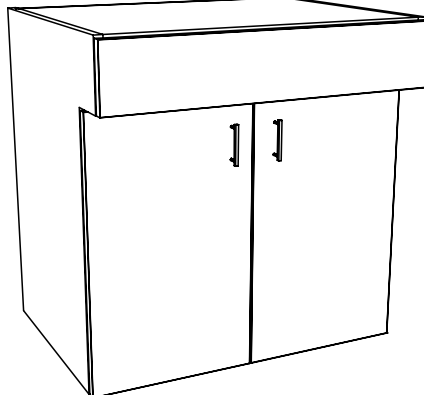
Specify Tilt or FD



Specify Distance FD Extends Forward
Sink, 1 Door, 1 False Dwr Extended

S2D1FDEXT

Specify Tilt or FD



Specify Distance FD Extends Forward
Sink, 2 Door, 1 False Dwr Extended