

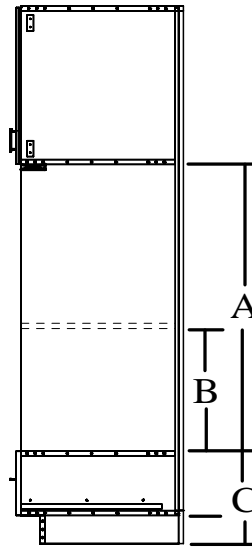


# OVEN CABINETS

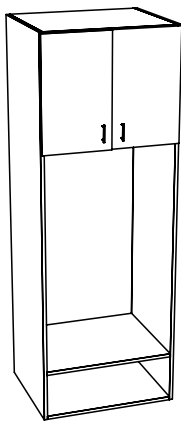
1. Oven Cabinets have 1/2" rabbited backs, standard.
2. 3/4" Dividers are available in the top section
3. Integral Toe is available for all Oven Cabinets
4. The oven section has no line bore holes
5. A loose filler is provided for top of oven opening

## Specifying Oven Openings

- A. Overall combined oven opening dimension
- B. Lower oven opening dimension (only when two openings required)
- C. Distance from the bottom of box side, to the oven opening

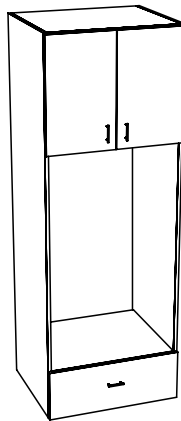


OC2DOD



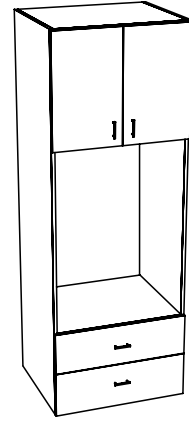
Oven - 2 Door, Open, Open

OC2D1D



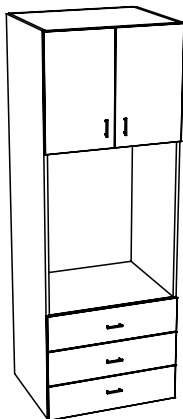
Oven - 2 Door, 1 Dwr

OC2D2D



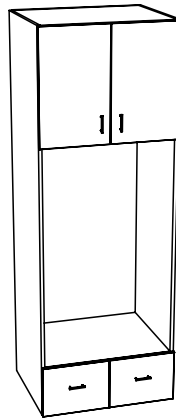
Oven - 2 Door, 2 Dwr

OC2D3D



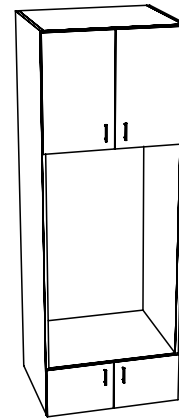
Oven - 2 Door, 3 Dwr

OC2D1DP



Oven - 2 Door, 1 Dwr Pair

OC4D0D

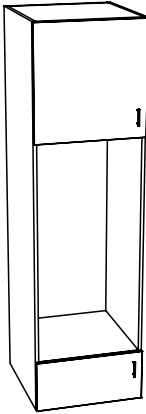


Oven - 4 Door, 0 Dwr



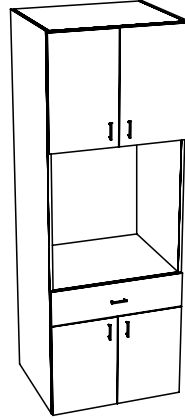
# OVEN CABINETS

OC2DS



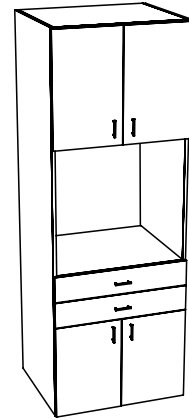
Oven - 2 Door, Single

OC4D1D



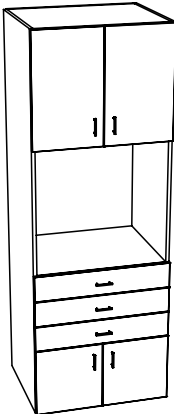
Oven - 4 Door, 1 Dwr

OC4D2D



Oven - 4 Door, 2 Dwr

OC4D3D



Oven - 4 Door, 3 Dwr

.

.

.

.

.

.

.

.

.

.