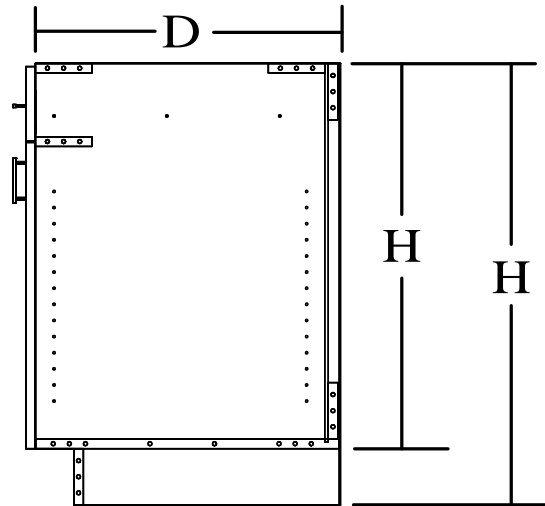




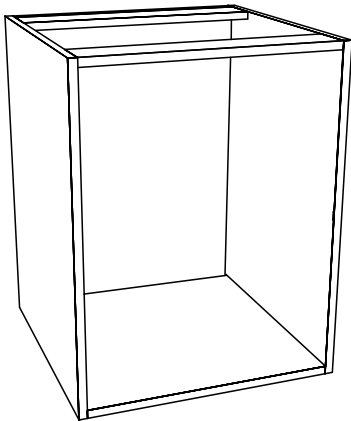
# BASE

1. Stretchers, Solid Top, Full Tops available
2. Custom Sectioning available
3. Adjustable or Fixed Shelves
4. Specify Finished Ends and Scribe
5. Cabinets available any size
6. Cabinets available any material
7. Solid backs available in 1/4", 1/2", 3/4"
8. Solid backs are rabbited in +1/16"
9. Integral Toe is available (Specify Ht and Depth)



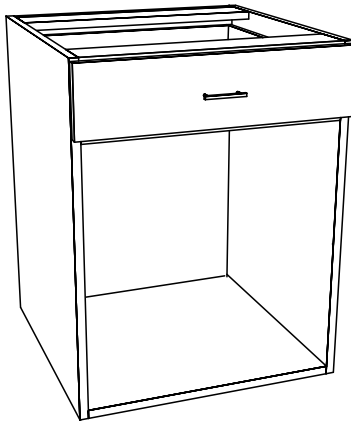
\* When Integral Toe is specified, you must specify toe height, and knotch depth

**B0D**



Base - 0 Door

**B0D1D**



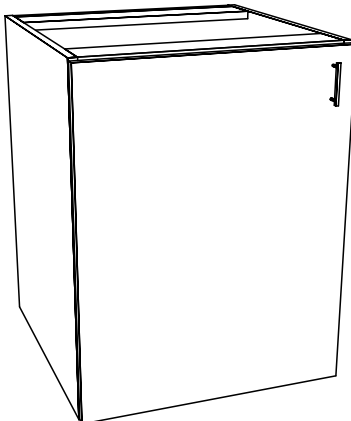
Base - 0 Door, 1 Dwr

**B0D2D**



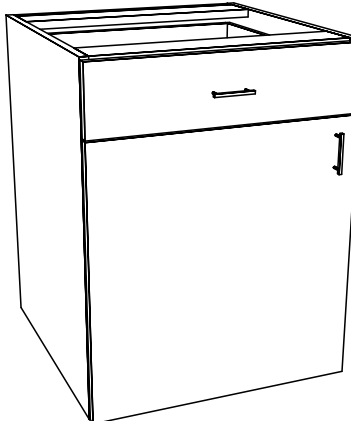
Base - 0 Door, 2 Dwr

**B1D**



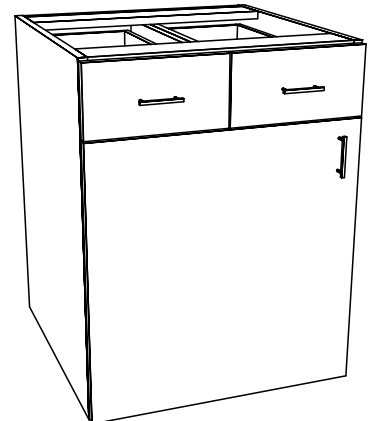
Base - 1 Door

**B1D1D**



Base - 1 Door, 1 Dwr

**B1D2D**

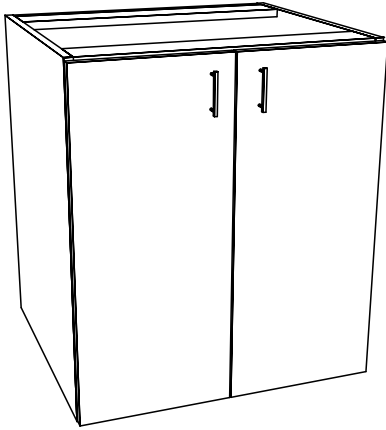


Base - 1 Door, 2 Dwr



# BASE

B2D



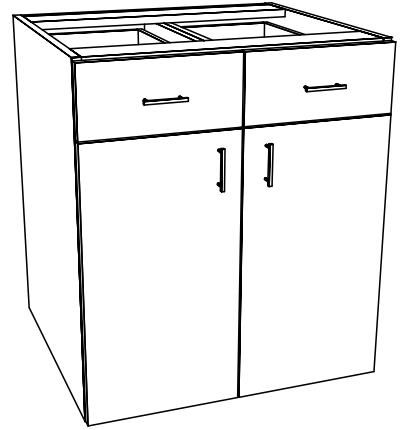
Base - 2 Door

B2D1D



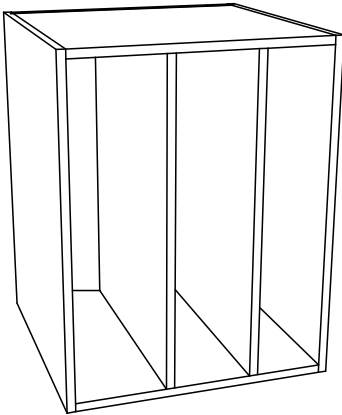
Base - 2 Door, 1 Dwr

B2D2D



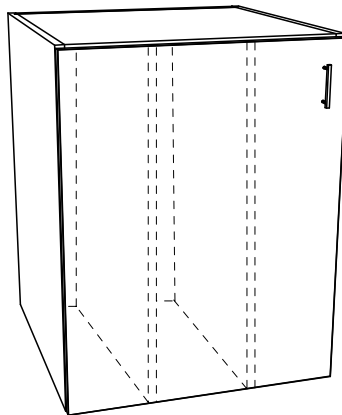
Base - 2 Door, 2 Dwr

B0DVP



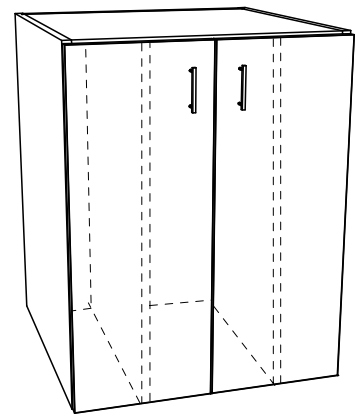
Specify Left / Right Openings  
Base - 0 Door, 2 Vert. Partitions

B1DVP



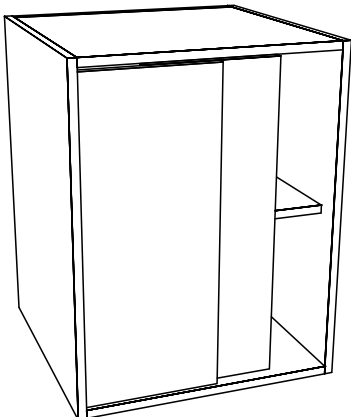
Specify Left / Right Openings  
Base - 1 Door, 2 Vert. Partitions

B2DVP



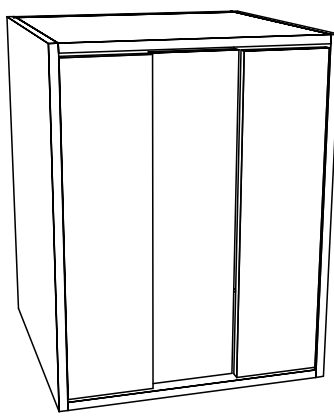
Specify Left / Right Openings  
Base - 2 Door, 2 Vert. Partitions

B2SD



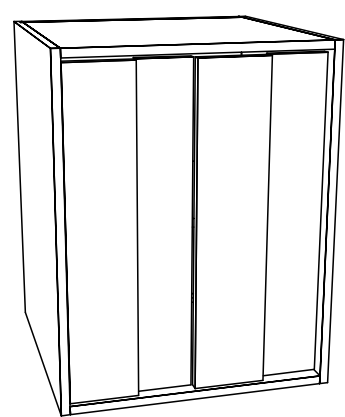
Base - 2 Slg Door, 1 Divider

B3SD



Base - 3 Slg Door, 2 Divider

B4SD

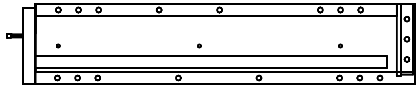


Base - 4 Slg Door, 3 Divider



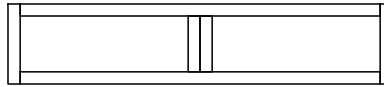
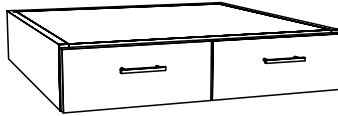
# BASE

### KD1D



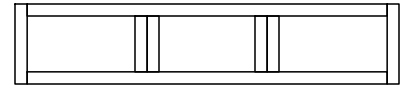
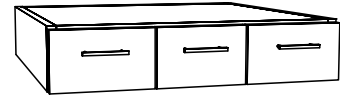
Bottoms and Backs are Optional  
Full Tops Only On K.D. Cabinets  
Knee Desk - 1 Drawer

### KD2D



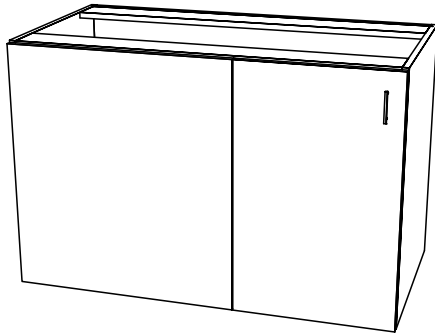
Bottoms and Backs are Optional  
Full Tops Only On K.D. Cabinets  
Knee Desk - 2 Drawer

### KD3D



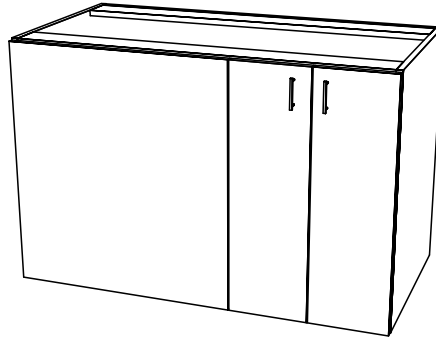
Bottoms and Backs are Optional  
Full Tops Only On K.D. Cabinets  
Knee Desk - 3 Drawer

### BB1D0DL / BB1D0DR



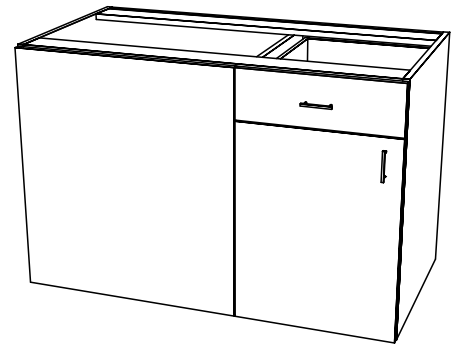
Specify blind panel width, surface or inset  
Base Blind - 1 Door, 0 Dwr

### BB2D0DL / BB2D0DR



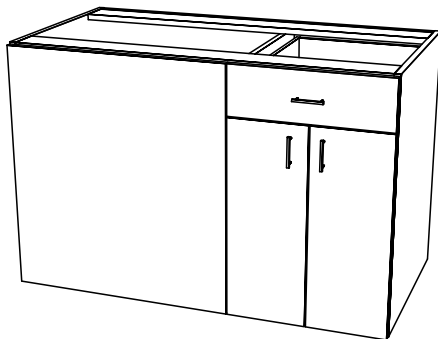
Specify blind panel width, surface or inset  
Base Blind - 2 Door, 0 Dwr

### BB1D1DL / BB1D1DR



Specify blind panel width, surface or inset  
Base Blind - 1 Door, 1 Dwr

### BB2D1D



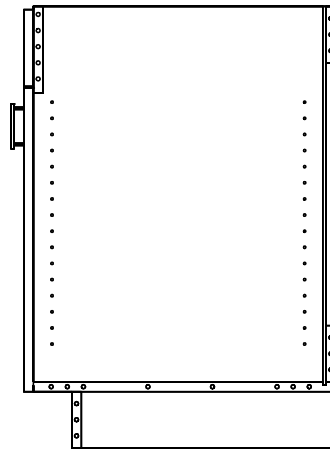
Specify blind panel width, surface or inset  
Base Blind - 2 Door, 1 Dwr



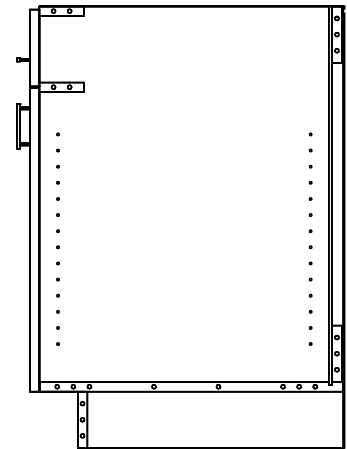
# SINK

1. Sink cabinets have no top stretchers
2. Sink cabinets can be ordered with no bottoms
3. Cabinets are available with removeable bottoms

False Dwr Construction

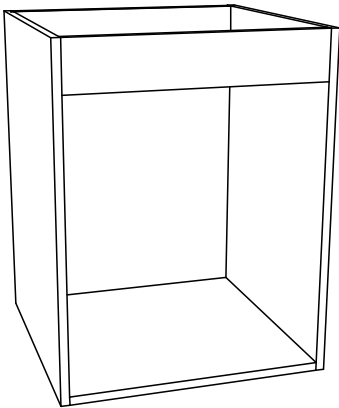


Tilt - Drw Construction



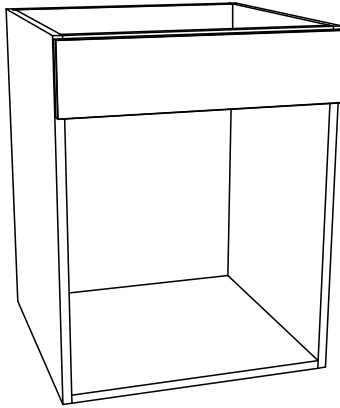
\* When Integral Toe is specified, you must specify toe height, and knotch depth

S0D0FD



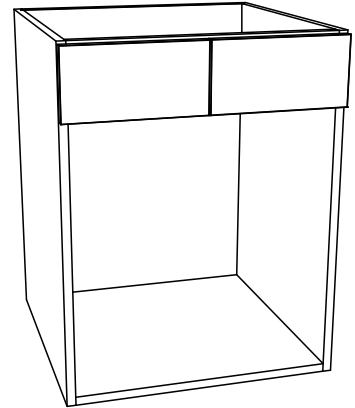
Sink - 0 Door, 0 False Dwr

S0D1FD



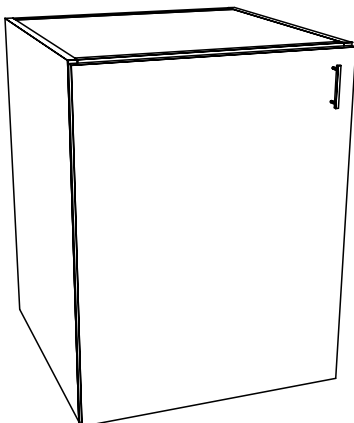
Sink - 0 Door, 1 False Dwr

S0D2FD



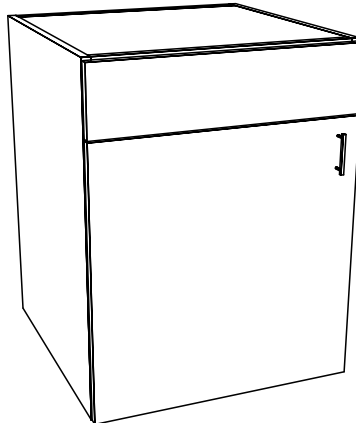
Sink - 0 Door, 2 False Dwr

S1D0FD



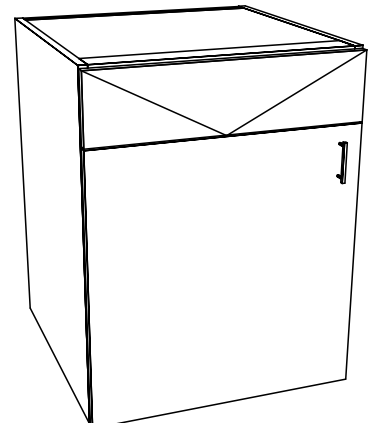
Sink - 1 Door, 0 False Dwr

S1D1FD



Sink - 1 Door, 1 False Dwr

S1D1TD

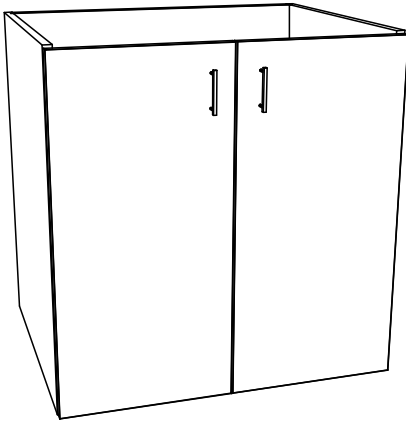


Sink - 1 Door, 1 Tilt Dwr



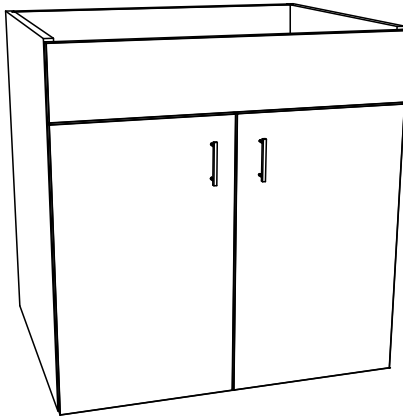
# SINK

S2D0FD



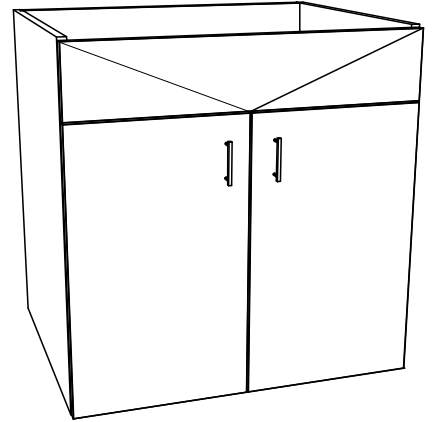
Sink - 2 Door, 0 False Dwr

S2D1FD



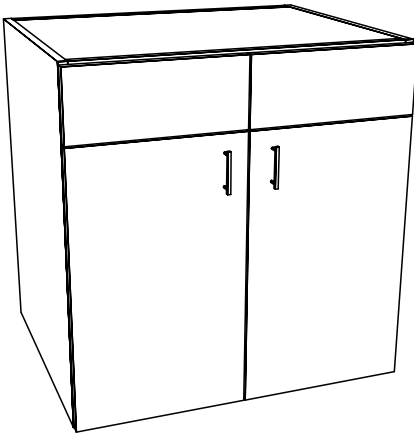
Sink - 2 Door, 1 False Dwr

S2D1TD



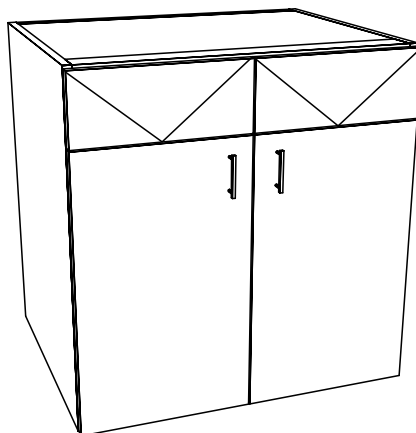
Sink - 2 Door, 1 Tilt Dwr

S2D2FD



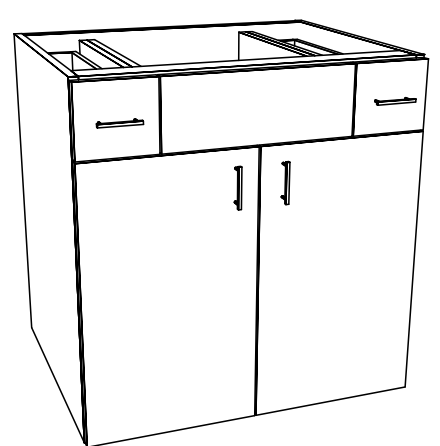
Sink - 2 Door, 2 False Dwr

S2D2TD



Sink - 2 Door, 2 Tilt Dwr

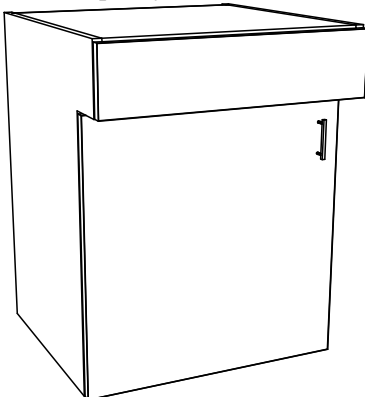
S2D2D1FD



Sink - 2 Door, 2 Dwr, 1 False Dwr

S1D1FDEXT

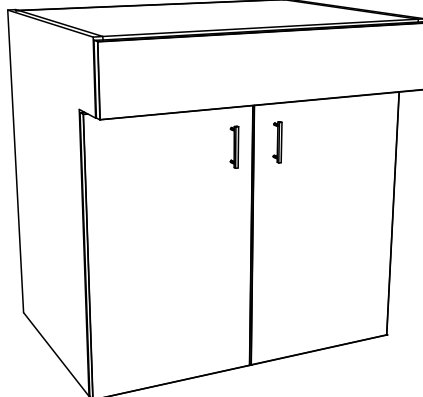
Specify Tilt or FD



Specify Distance FD Extends Forward  
Sink, 1 Door, 1 False Dwr Extended

S2D1FDEXT

Specify Tilt or FD

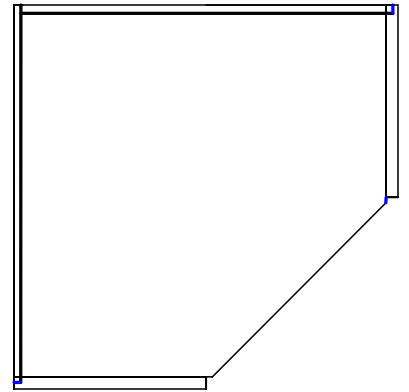
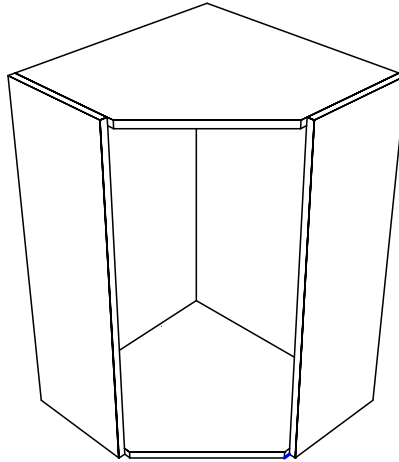


Specify Distance FD Extends Forward  
Sink, 2 Door, 1 False Dwr Extended

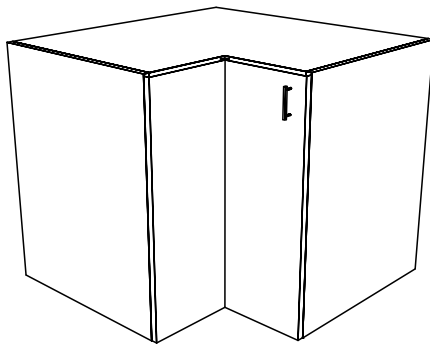


# BASE CORNER

1. Backs are 1/2" material rabbited in + 1/16"
2. Tops and bottoms extend past sides in front to maintain proper door bumper gap
3. Backs are line bore drilled to support shelves

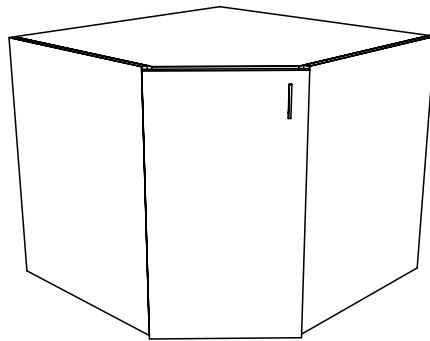


BC1DPC



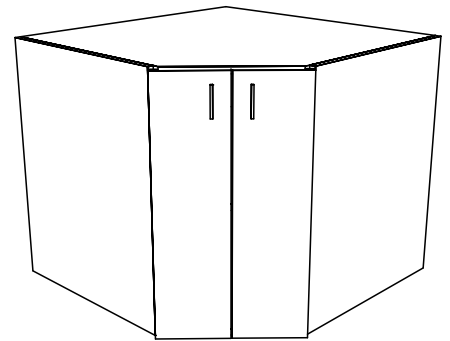
Available With Round Back  
Base Corner - 1 Door, Pie Cut

BC1D0D



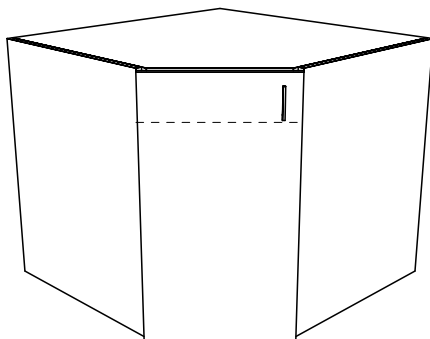
Available With Round Back  
Base Corner - 1 Door, 0 Dwr

BC2D0D



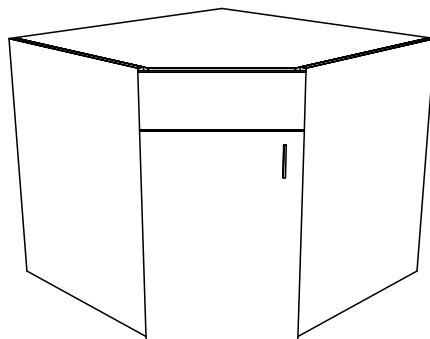
Available With Round Back  
Base Corner - 2 Door, 0 Dwr

SC1D0FD



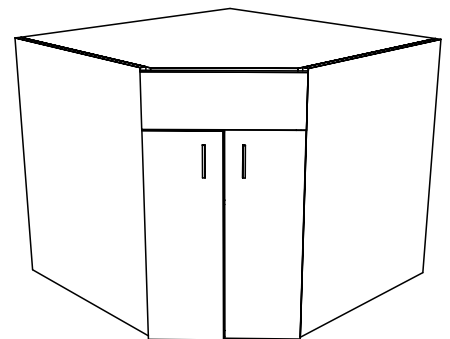
Sink - 1Door, 0 False Dwr

SC1D1FD



Sink Corner - 1 Door, 1 False Dwr

SC2D1FD

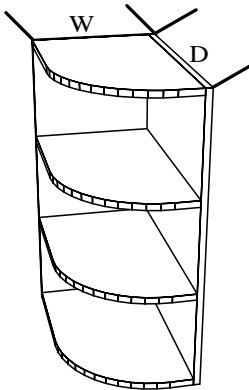


Sink Corner - 2 Door, 1 False Dwr



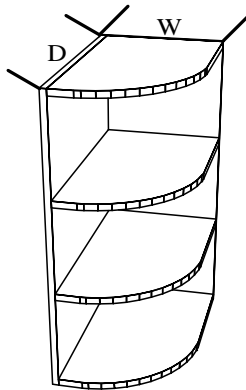
# BASE/WALL END

BECL0D



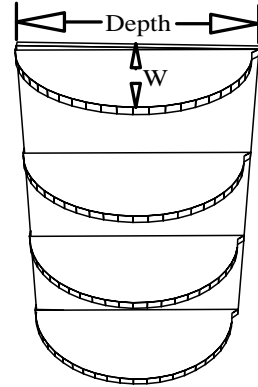
Specify Radius, Fixed Shelves Only  
Base End - Curved Left, 0 Door

BECR0D



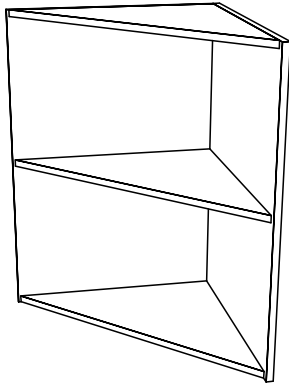
Specify Radius, Fixed Shelves Only  
Base End - Curved Right, 0 Door

BEHR0D



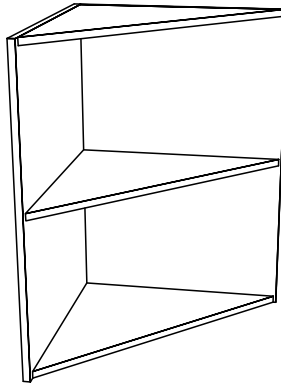
Specify Quantity of Fixed Shelves  
Base End - Half Round, 0 Door

BELOD



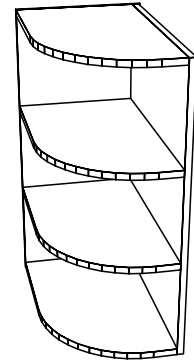
Specify Quantity of Fixed Shelves  
Base End - Clipped Left, 0 Door

BER0D



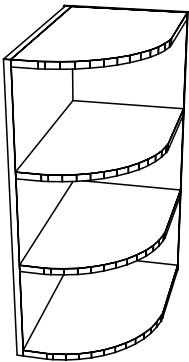
Specify Quantity of Fixed Shelves  
Base End - Clipped Right, 0 Door

WECL0D



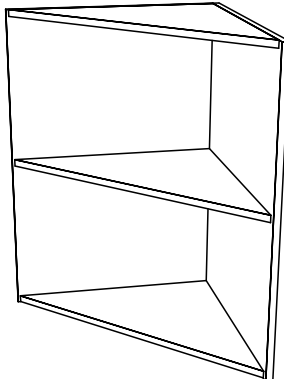
Specify Radius, Fixed Shelves Only  
Wall End - Curved Left, 0 Door

WECR0D



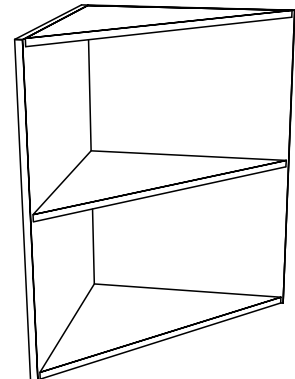
Specify Radius, Fixed Shelves Only  
Wall End - Curved Right, 0 Door

WELOD



Specify Quantity of Fixed Shelves  
Wall End - Clipped Left, 0 Door

WER0D

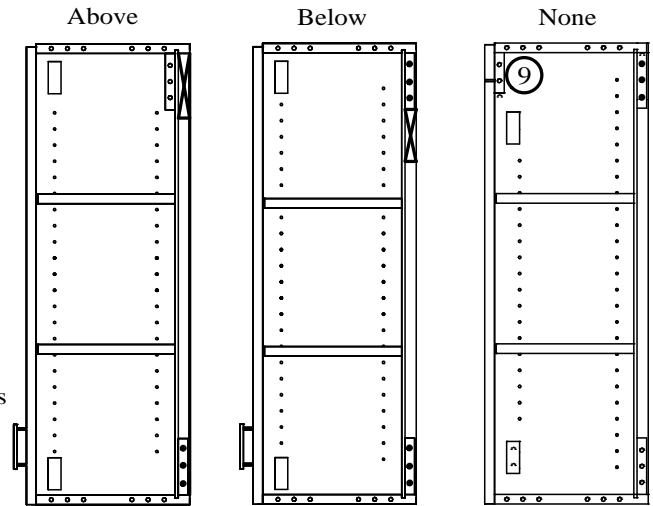


Specify Quantity of Fixed Shelves  
Wall End - Clipped Right, 0 Door



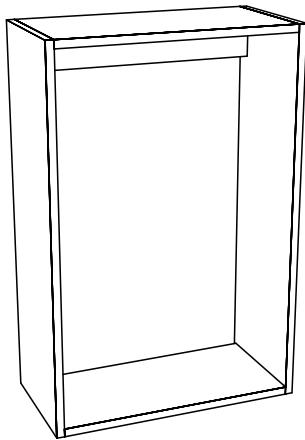
# WALL

1. Specify Wall Notch Above, Below, None
2. With undercabinet lights, specify the light rail height (Doors and Finished Ends will extend that amount)
3. Specify bottom finish material
4. Specify Finished Ends and Scribe dimension if required
5. Solid Backs available in 1/4", 1/2", 3/4"
6. When Solid Back is specified, backs are rabbited +1/16"
7. Custom Sectioning available
8. When Sectioning cabinets, specify interior opening dimensions
9. Molding filler can be ordered in any wall cabinet



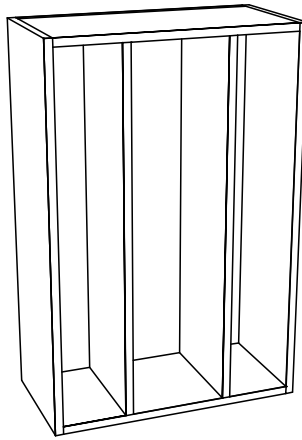
\* When "Wall Nailer In" is specified, unfinished ends are routed for wall mount nailer strip

W0D



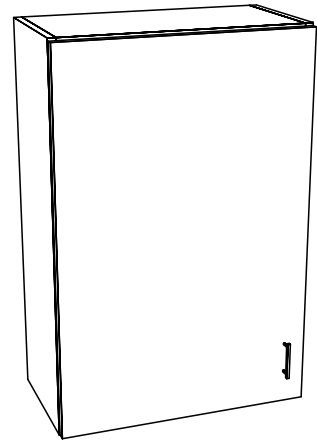
Wall - 0 Door

W0D2VP



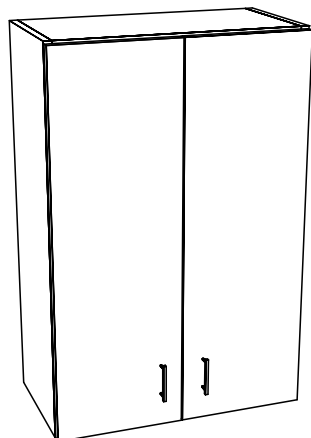
\*Specify Left / Right Openings  
Wall - 0 Door, 2 Vert Partitions

W1D



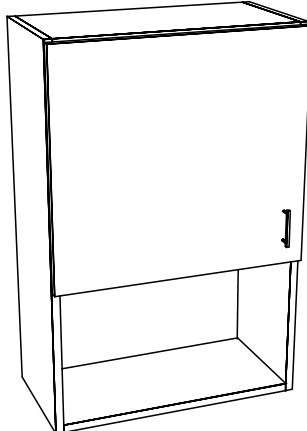
Wall - 1 Door

W2D



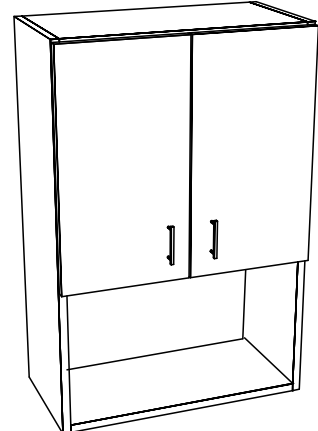
Wall - 2 Door

W1DMW



Back Optional In Lower Section  
Wall - 1 Door, Microwave

W2DMW



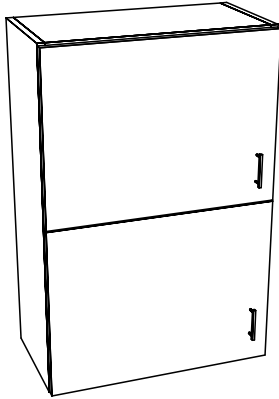
Back Optional In Lower Section  
Wall - 2 Door, Microwave





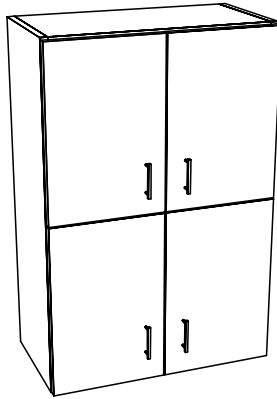
# WALL

W2D2S



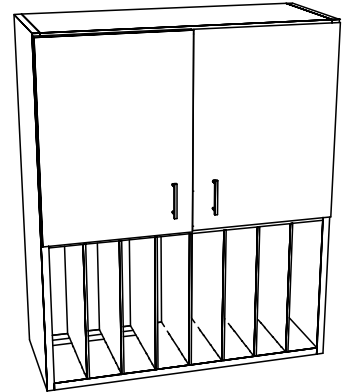
Specify lower section height  
Wall - 2 Door, 2 Section

W4D2S



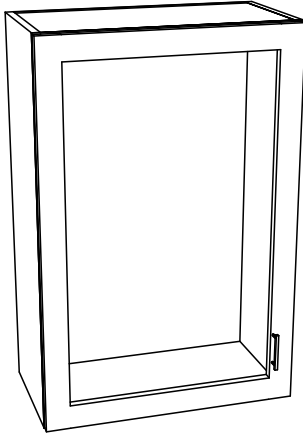
Specify lower section height  
Wall - 4 Door, 2 Section

W2D2SMD



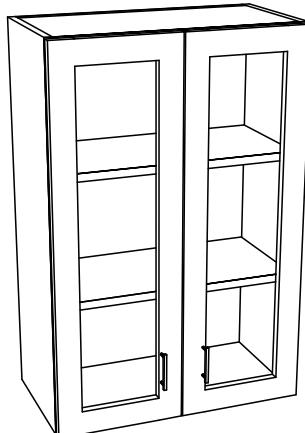
Specify lower section height  
Specify up to 12 - 1/4" Dividers  
Wall - 2 Door, 2 Section, Mult. Divider

W1D-G



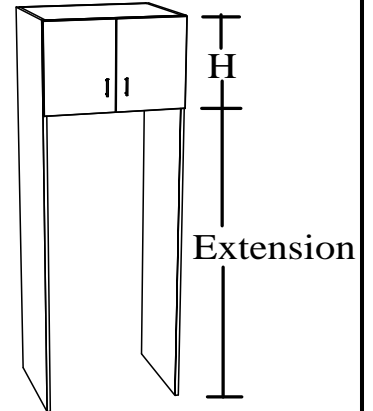
\*Specify Style and Rail Widths  
Wall - 1 Door, Glass Cut Out

W2D-G



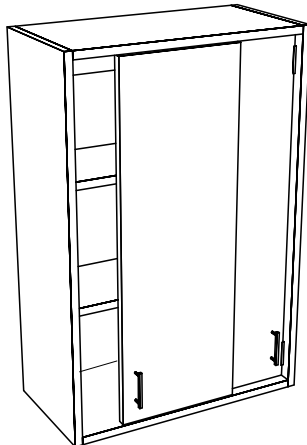
\*Specify Style and Rail Widths  
Wall - 2 Door, Glass Cut Out

W2DR



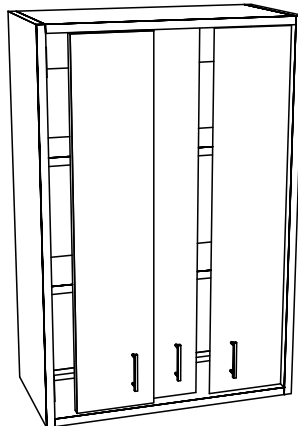
\* Optional - Top Door Hinge  
Specify L/R and Amount to Extend  
Wall - 2 Door Refrigerator

W2SD1D



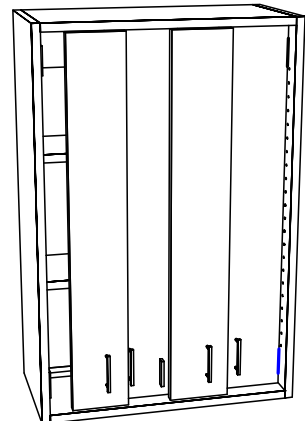
Wall - 2 Sliding Door, 1 Divider

W3SD2D



Wall - 3 Sliding Door, 2 Divider

W4SD3D

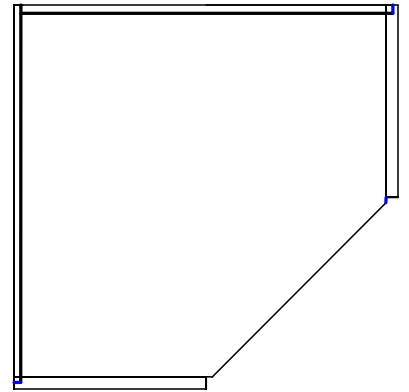
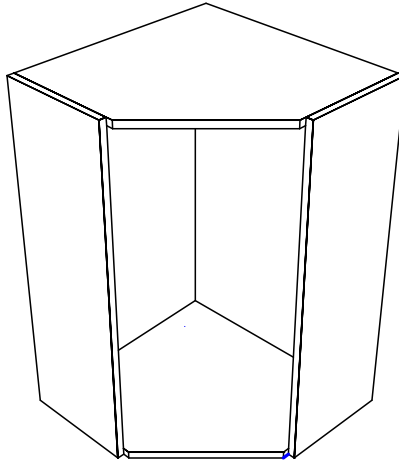


Wall - 4 Sliding Door, 3 Divider

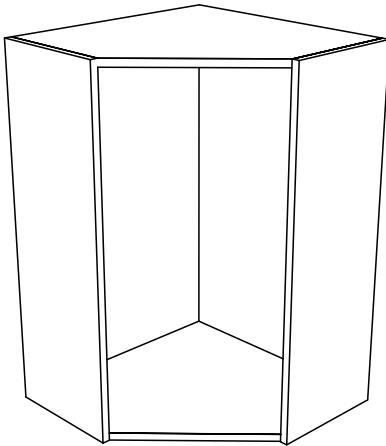


# WALL CORNER

1. Backs are 1/2" material rabbited in + 1/16"
2. Tops and bottoms extend past sides in front to maintain proper door bumper gap
3. Backs are line bore drilled to support shelves

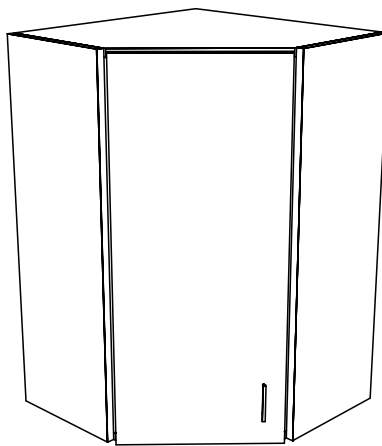


WC0D



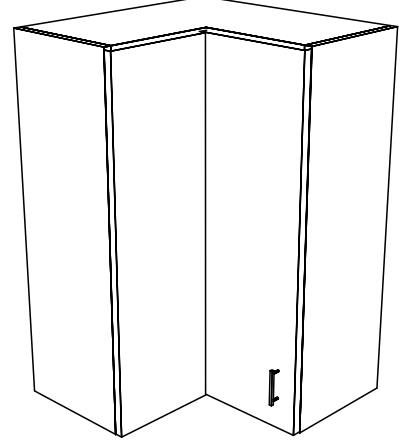
Wall Corner - 0 Door

WC1D0D



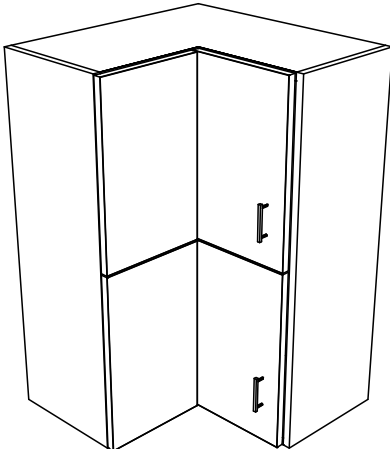
Wall Corner - 1 Door, 0 Divider

WC1DPC



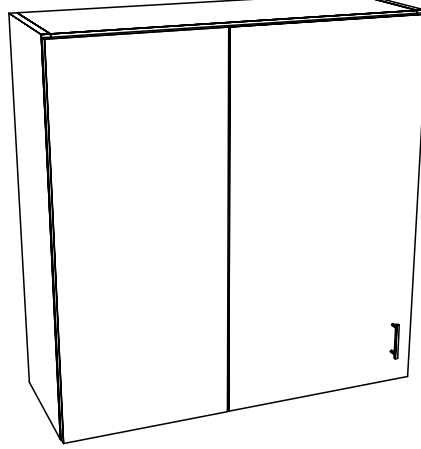
Wall Corner - 1 Door, Pie Cut

WC2DPC2S



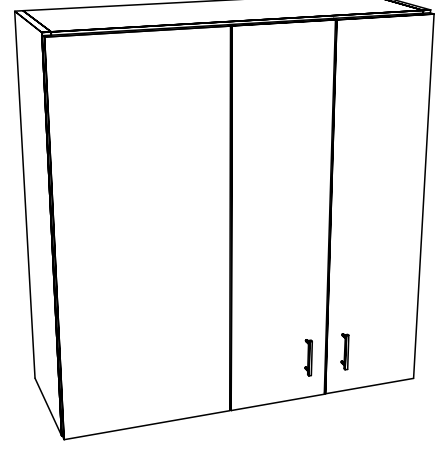
Wall Corner - 2 Door, Pie Cut 2 Section

WB1D0D



\*Specify Blind Panel Width  
Wall Blind - 1 Door

WB2D0D

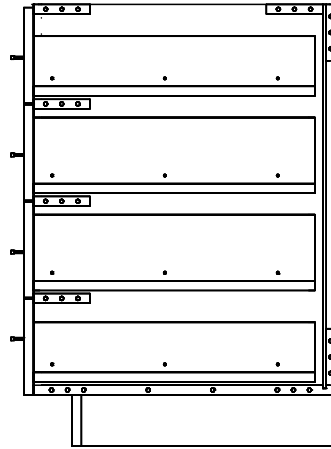


\*Specify Blind Panel Width  
Wall Blind - 2 Door

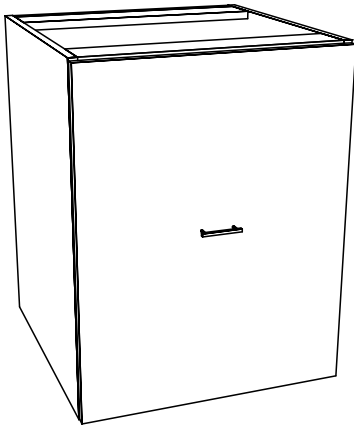


# DRAWER BANKS

1. Drawer faces can be any size
2. Holes are drilled for specified hardware eliminating the need to count holes for placement
3. Drawer stretchers are optional
4. Cabinets can be ordered with integral toe
5. Drawer boxes can be ordered with cabinet
6. Cabinet can be constructed with stretchers or a full top

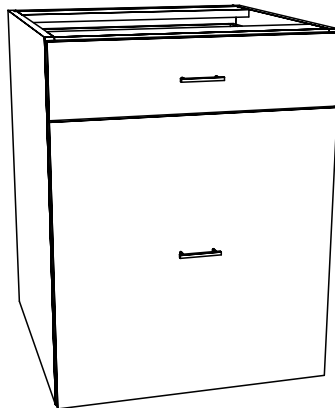


DB1D\_1



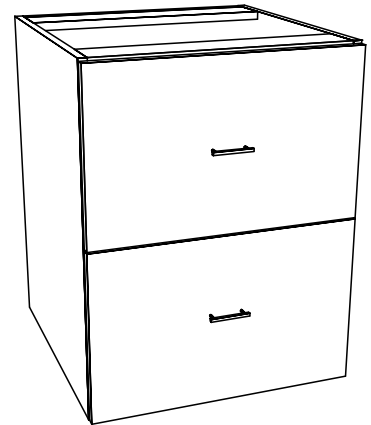
Drawer - 1 Float

DB2



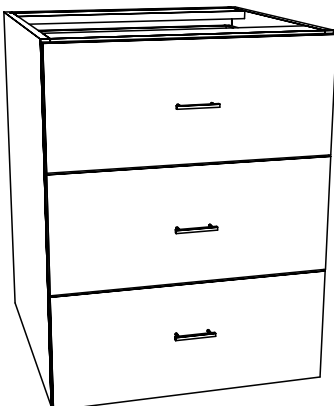
Drawer - 2 Custom (Specify Sizes)

DB2D\_1



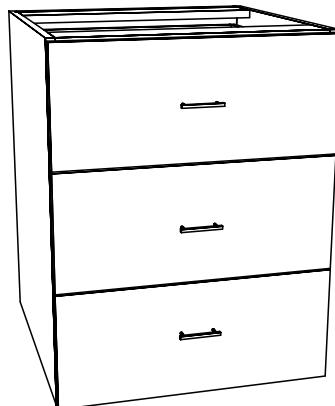
Drawer - 2 Float

DB3



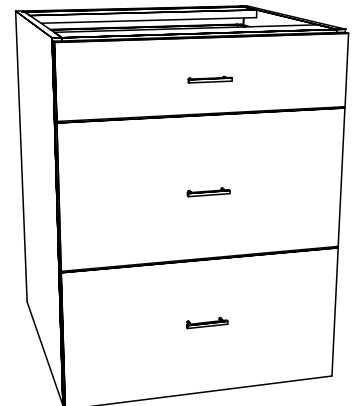
Drawer - 3 Custom (Specify Sizes)

DB3D\_1



Drawer - 3 Float

DB3D\_2

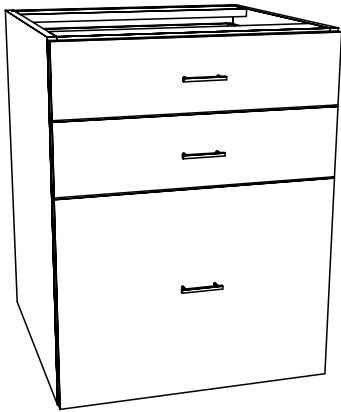


Drawer - 1 Regular, 2 Float



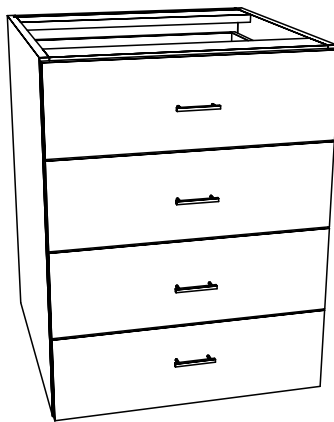
# DRAWER BANKS

DB3D\_3



Drawer - 2 Regular, 1 Float

DB4



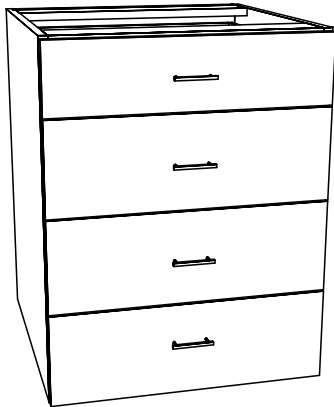
Drawer - 4 Custom (Specify Sizes)

DB4D\_1



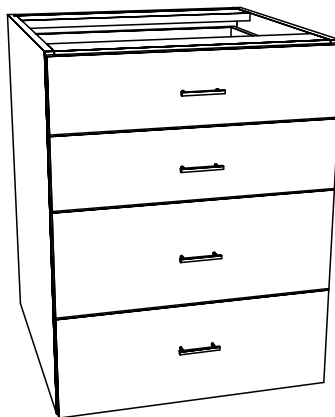
Drawer - 4 Float

DB4D\_2



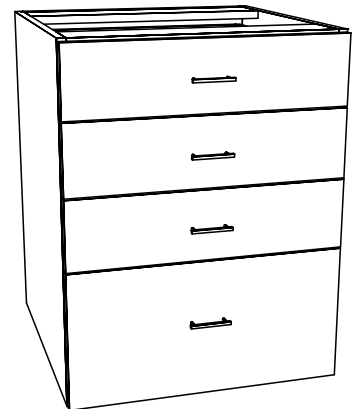
Drawer - 1 Regular, 3 Float

DB4D\_3



Drawer - 2 Regular, 2 Float

DB4D\_4



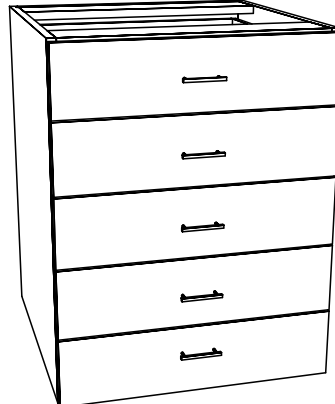
Drawer - 3 Regular, 1 Float

DB5



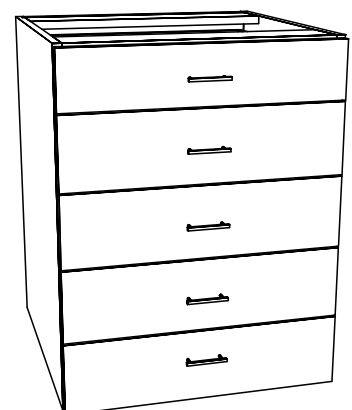
Drawer - 5 Custom (Specify Sizes)

DB5D\_1



Drawer - 5 Float

DB5D\_2



Drawer - 1 Regular, 4 Float



# DRAWER BANKS

DB5D\_3



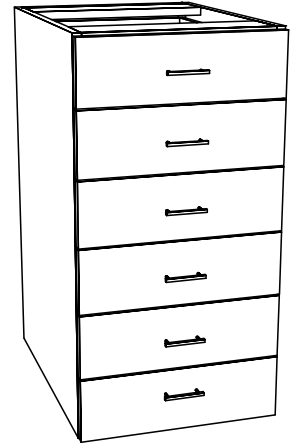
Drawer - 2 Regular, 3 Float

DB5D\_4



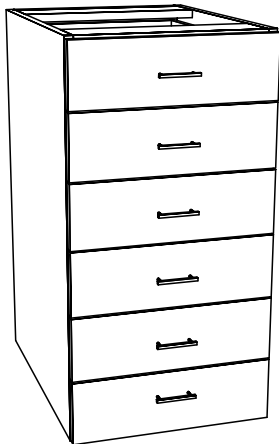
Drawer - 3 Regular, 2 Float

DB6



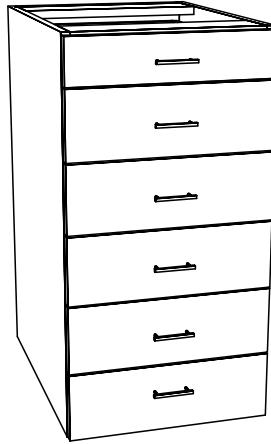
Drawer - 6 Custom (Specify Sizes)

DB6D\_1



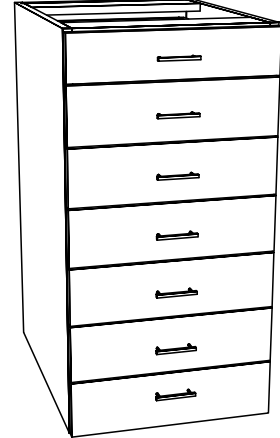
Drawer - 6 Float

DB6D\_2



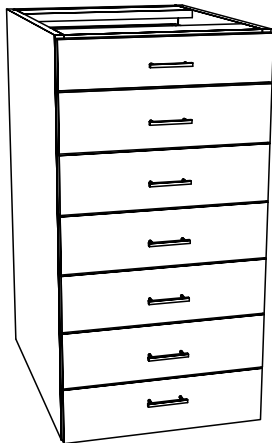
Drawer - 1 Regular, 5 Float

DB7



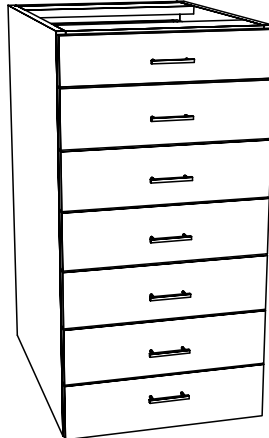
Drawer - 7 Custom (Specify Sizes)

DB7D\_1



Drawer - 7 Float

DB7D\_2

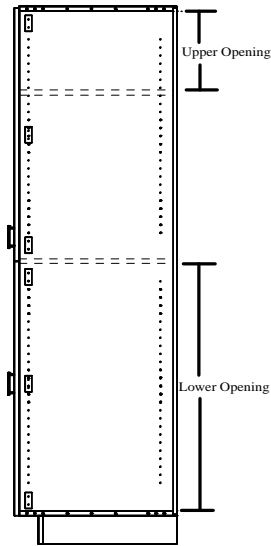


Drawer - 1 Regular, 6 Float

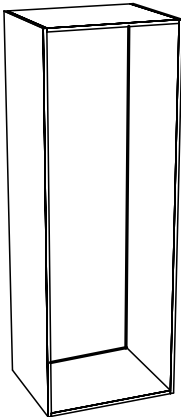


# TALL

1. Tall cabinets have no nailers
2. Tall cabinets have standard 1/2" backs
3. Tops, Bottoms and Sides are rabbited 1/2" deep
4. Integral Toe is available
5. When sectioning, specify interior opening heights
6. Molding Filler option is available

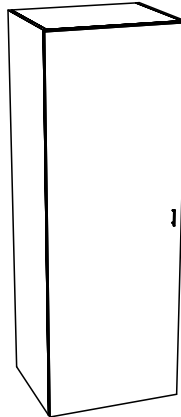


T0D



Tall - 0 Door

T1D



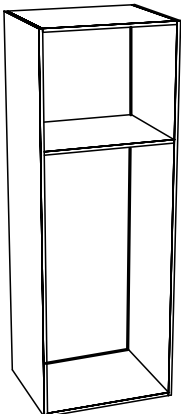
Tall - 1 Door

T2D



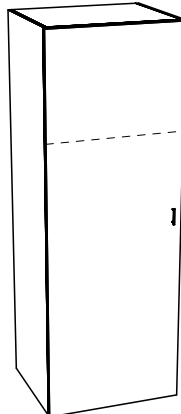
Tall - 2 Door

T0D2S



\*Specify lower opening height  
Tall - 0 Door, 2 Section

T1D2S



\*Specify lower opening height  
Tall - 1 Door, 2 Section

T2D2S

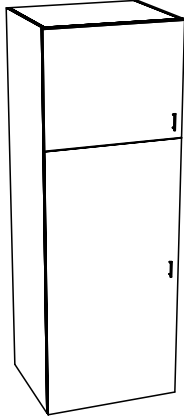


\*Specify lower opening height  
Tall - 2 Door, 2 Section



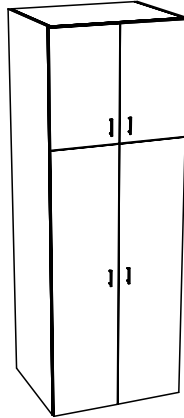
# TALL

T2D0D2S



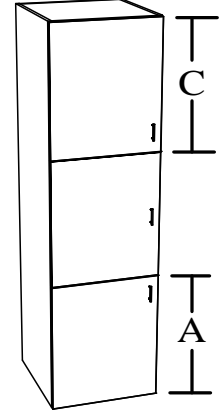
\*Specify lower opening height  
Tall - 2 Door, 0 Divider, 2 Section

T4D0D2S



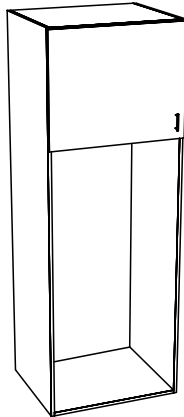
\*Specify lower opening height  
Tall - 4 Door, 0 Divider, 2 Section

T3D3S



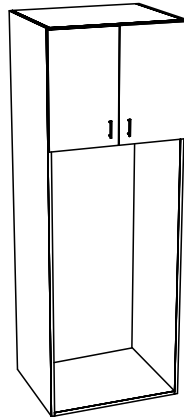
\*Specify opening heights for "A" and "C"  
Tall - 3 Door, 3 Section

T1D0DTV



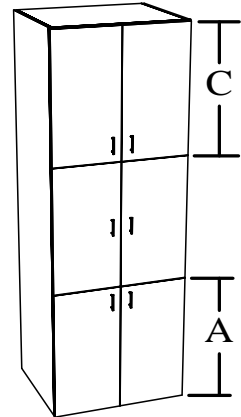
\*Specify lower opening height  
Tall - 1 Door, 0 Divider, TV

T2D1DTV



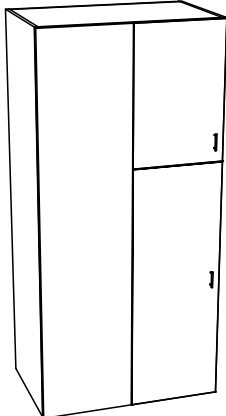
\*Specify lower opening height  
Tall - 2 Door, 1 Divider, TV

T6D3S



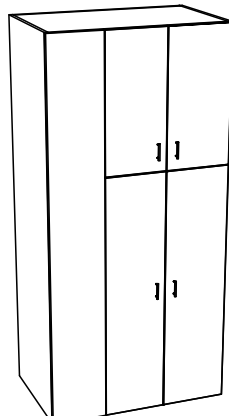
\*Specify opening heights for "A" and "C"  
Tall - 6 Door, 3 Section

TB2D



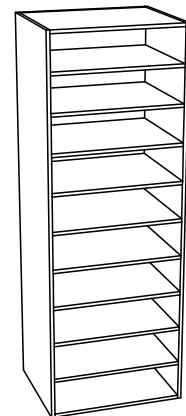
\*Specify blind panel width, lower opening  
Tall Blind - 2 Door

TB4D



\*Specify blind panel width, lower opening  
Tall Blind - 4 Door

T0DHP



No line bore

\*Specify up to 10 opening sizes  
Tall - Open Horizontal Partition

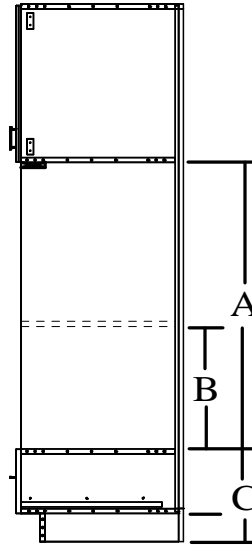


# OVEN

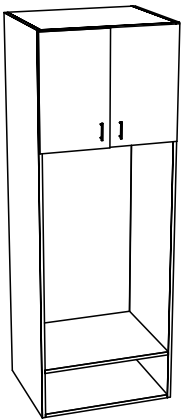
1. Oven Cabinets have 1/2" rabbited backs, standard.
2. 3/4" Dividers are available in the top section
3. Integral Toe is available for all Oven Cabinets
4. The oven section has no line bore holes
5. A loose filler is provided for top of oven opening

## Specifying Oven Openings

- A. Overall combined oven opening dimension
- B. Lower oven opening dimension (only when two openings required)
- C. Distance from the bottom of box side, to the oven opening

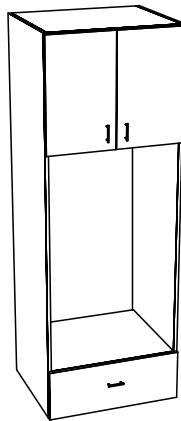


OC2DOD



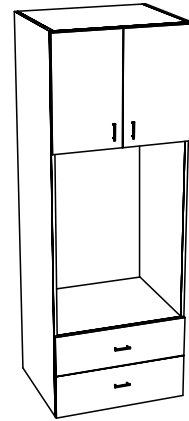
Oven - 2 Door, Open, Open

OC2D1D



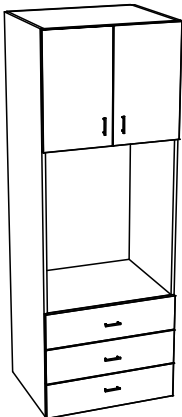
Oven - 2 Door, 1 Dwr

OC2D2D



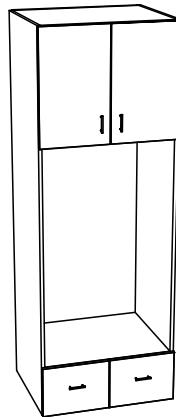
Oven - 2 Door, 2 Dwr

OC2D3D



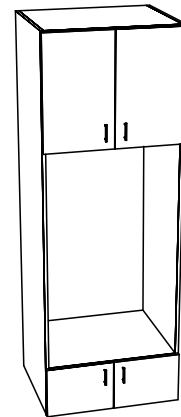
Oven - 2 Door, 3 Dwr

OC2D1DP



Oven - 2 Door, 1 Dwr Pair

OC4D0D



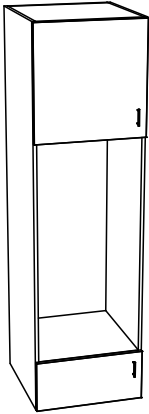
Oven - 4 Door, 0 Dwr





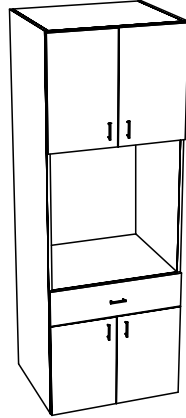
# OVEN

OC2DS



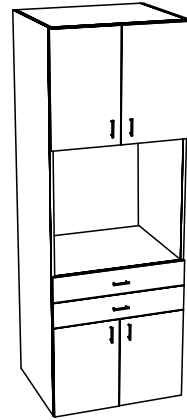
Oven - 2 Door, Single

OC4D1D



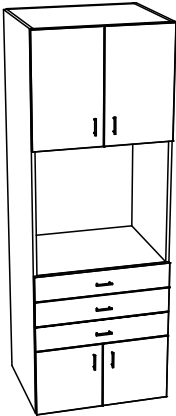
Oven - 4 Door, 1 Dwr

OC4D2D



Oven - 4 Door, 2 Dwr

OC4D3D



Oven - 4 Door, 3 Dwr

.

.

.

.

.

.

.

.

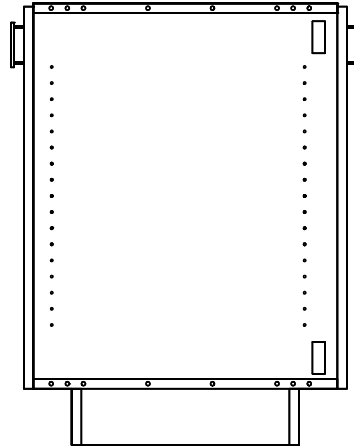
.

.

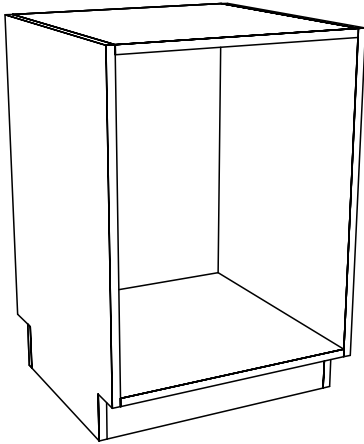


# PENINSULA BASE

1. P.B. Cabinets available with solid tops or rails
2. Available with Integral Toe

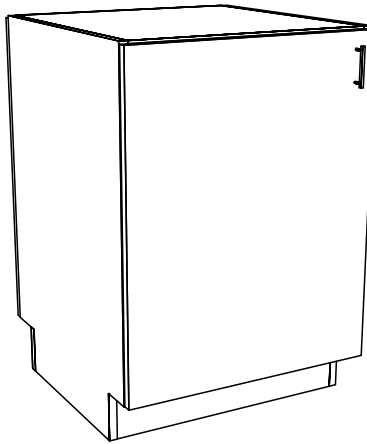


PB0D0D



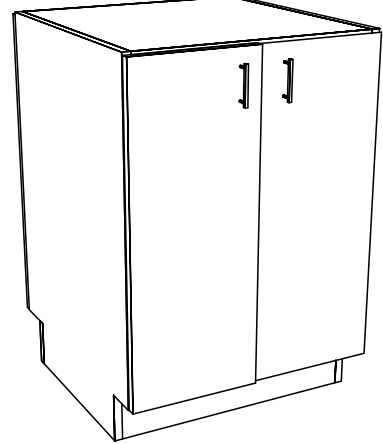
Peninsula Base - 0 Door, 0 Dwr

PB2D0D



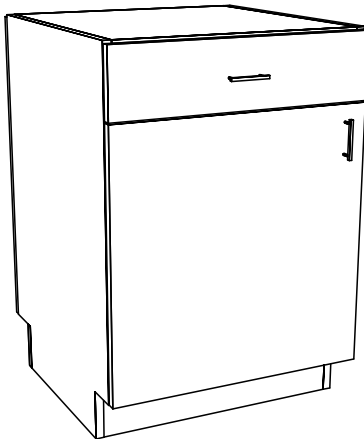
Peninsula Base - 2 Door, 0 Dwr

PB4D0D



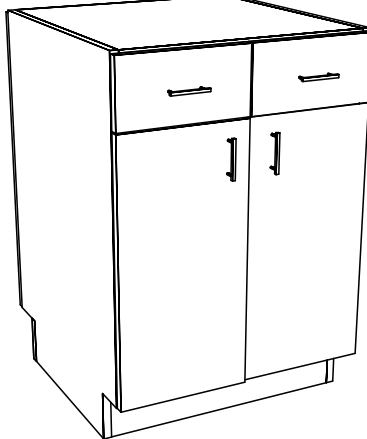
Peninsula Base - 4 Door, 0 Dwr

PB2D1D



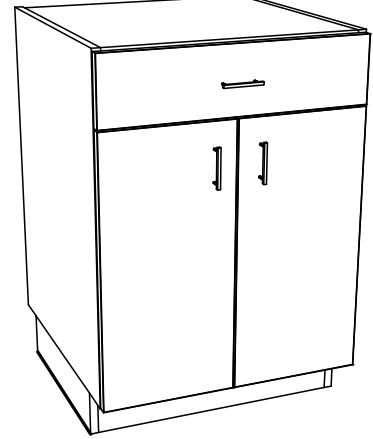
Peninsula Base - 2 Door, 1 Dwr, 1 FF

PB4D2D



Peninsula Base - 4 Door, 2 Dwr, 1 FF

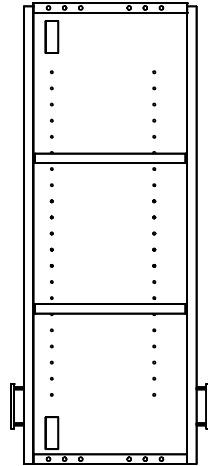
PB4D1D



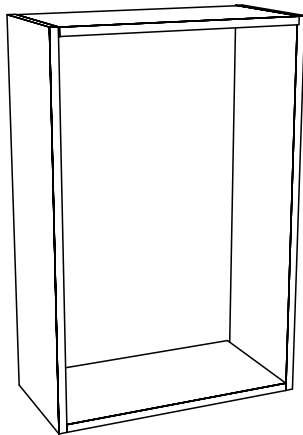
Peninsula Base - 4 Door, 1 Dwr, 1 FF



# PENINSULA WALL

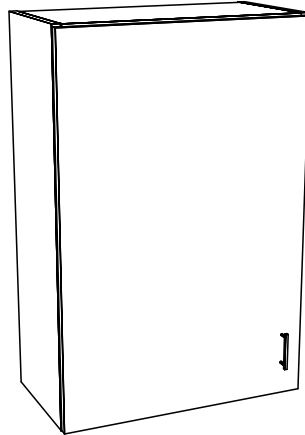


PW0D0D



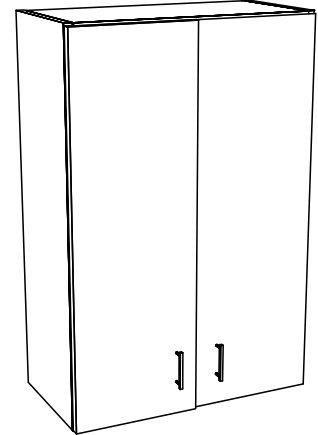
Peninsula Wall - 0 Door, 0 Divider

PW2D0D



Peninsula Wall - 2 Door, 0 Divider

PW4D0D

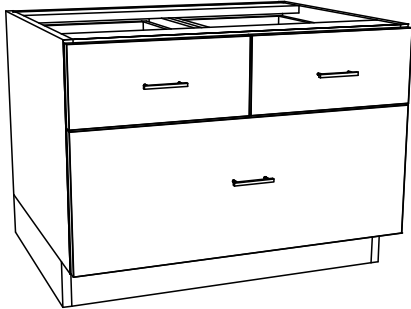


Peninsula Wall - 4 Door, 0 Divider



# DRAWER STACKS

DS1P1S



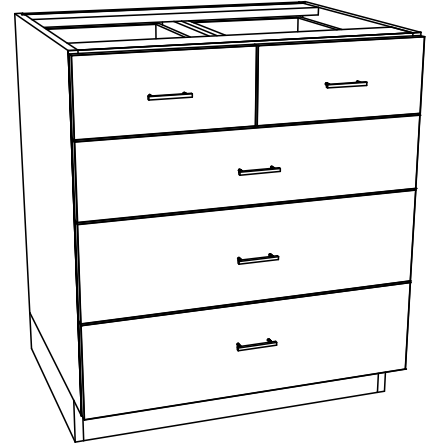
Drawer Stack - 1 Pair, 1 Single

DS1P2S



Drawer Stack - 1 Pair, 2 Single

DS1P3S



Drawer Stack - 1 Pair, 3 Single

DS2P1S



Drawer Stack - 2 Pair, 1 Single

DS2P2S



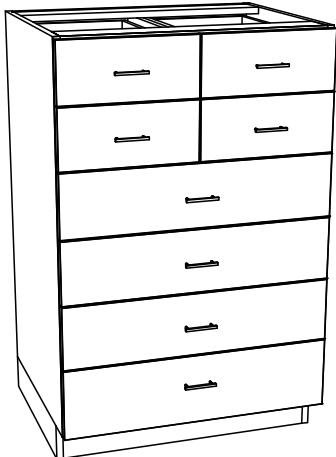
Drawer Stack - 2 Pair, 2 Single

DS2P3S



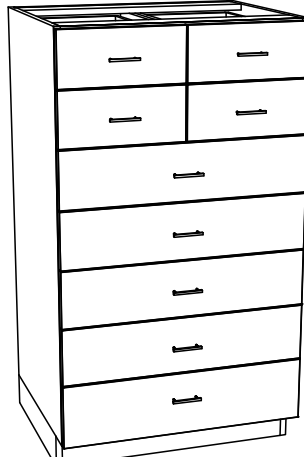
Drawer Stack - 2 Pair, 3 Single

DS2P4S



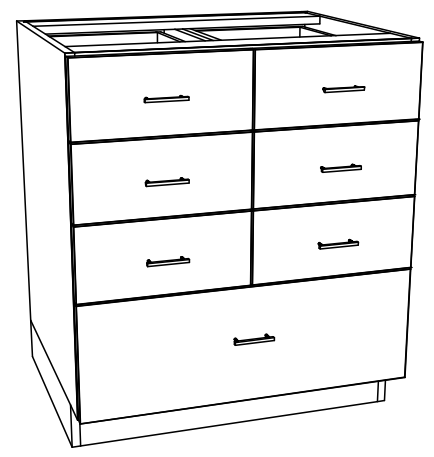
Drawer Stack - 2 Pair, 4 Single

DS2P5S



Drawer Stack - 2 Pair, 5 Single

DS3P1S

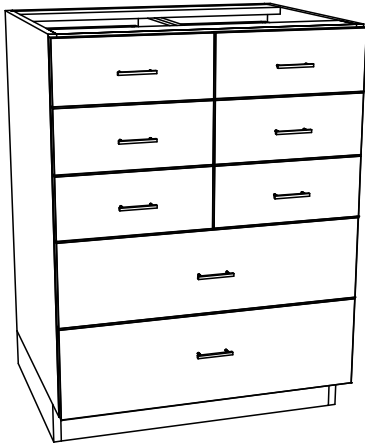


Drawer Stack - 3 Pair, 1 Single



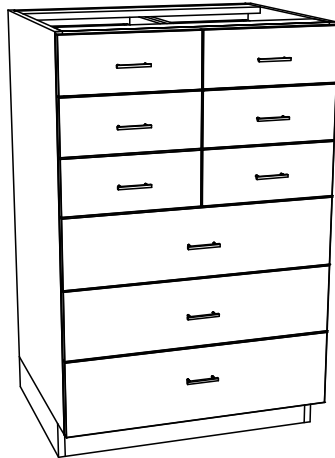
# DRAWER STACKS

DS3P2S



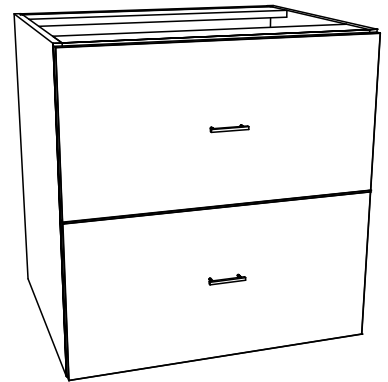
Drawer Stack - 3 Pair, 2 Single

DS3P3S



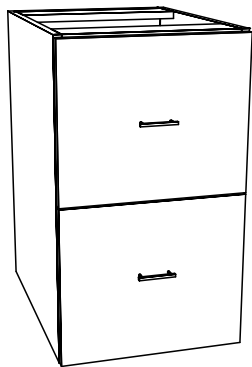
Drawer Stack - 3 Pair, 3 Single

2DRLAT



2 Drawer Lateral File

2DRPED

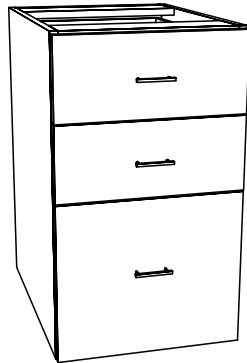


File

File

2 Drawer Pedestal

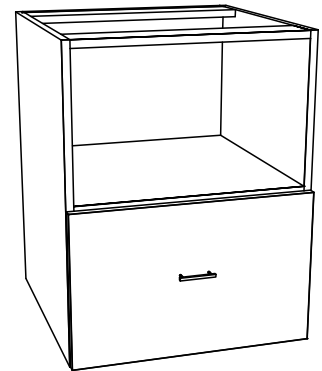
3DRPED



File

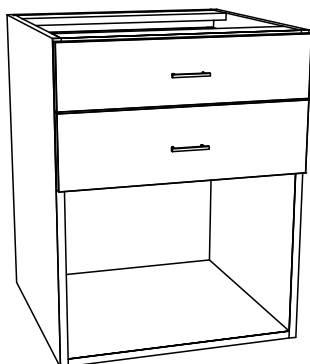
3 Drawer Pedestal

B0D1DL



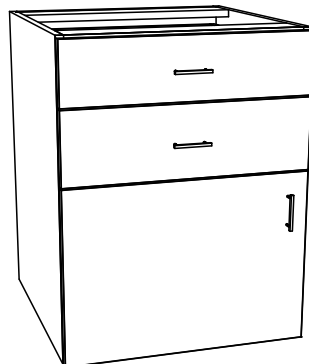
Base - 0 Door, 1 Dwr Lower

B0D2DS



Base - 0 Door, 2 Dwr Stacked

B1D2DS



Base - 1 Door, 2 Dwr Stacked

B2D2DS

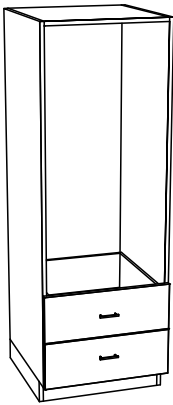


Base - 2 Door, 2 Dwr Stacked



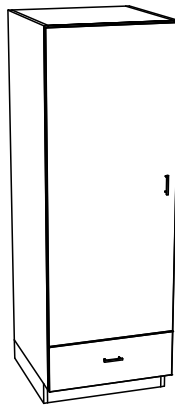
# WARDROBE

WD0D2D



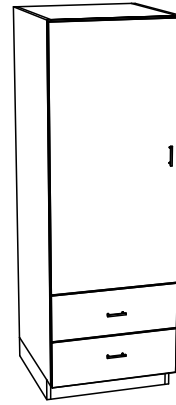
Specify All Dwr Front Heights  
Wardrobe - 0 Door, 2 Dwr

WD1D1D



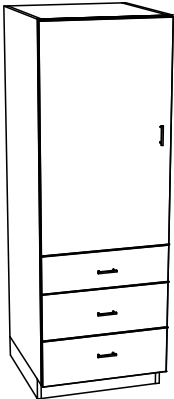
Specify All Dwr Front Heights  
Wardrobe - 1 Door, 1 Dwr

WD1D2D



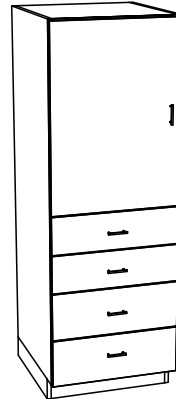
Specify All Dwr Front Heights  
Wardrobe - 1 Door, 2 Dwr

WD1D3D



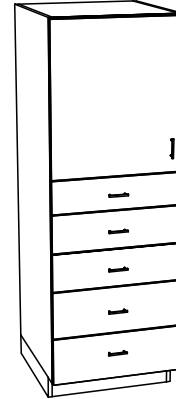
Specify All Dwr Front Heights  
Wardrobe - 1 Door, 3 Dwr

WD1D4D



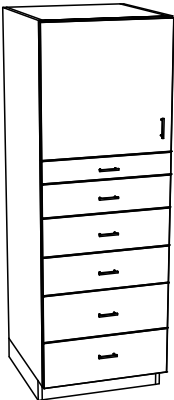
Specify All Dwr Front Heights  
Wardrobe - 1 Door, 4 Dwr

WD1D5D



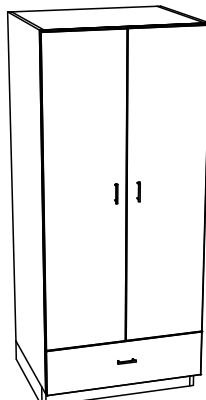
Specify All Dwr Front Heights  
Wardrobe - 1 Door, 5 Dwr

WD1D6D



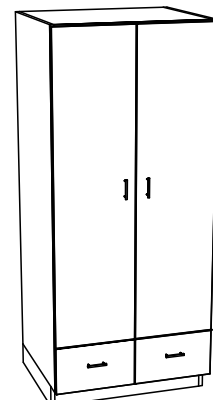
Specify All Dwr Front Heights  
Wardrobe - 1 Door, 6 Dwr

WD2D1D



Specify All Dwr Front Heights  
Wardrobe - 2 Door, 1 Dwr

WD2D1DP

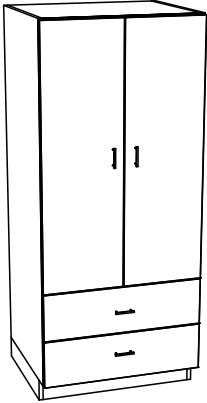


Specify All Dwr Front Heights  
Wardrobe - 2 Door, 1 Dwr Pair



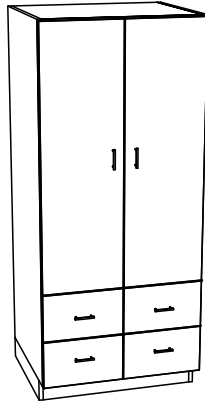
# WARDROBE

WD2D2D



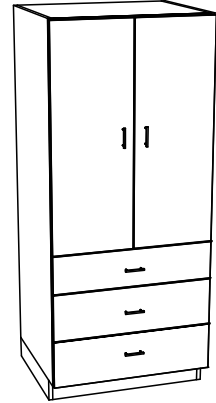
Specify All Dwr Front Heights  
Wardrobe - 2 Door, 2 Dwr

WD2D2DP



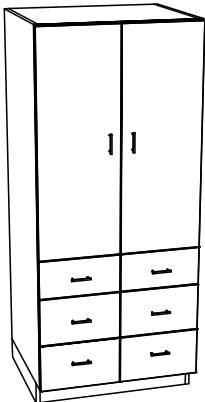
Specify All Dwr Front Heights  
Wardrobe - 2 Door, 2 Dwr Pair

WD2D3D



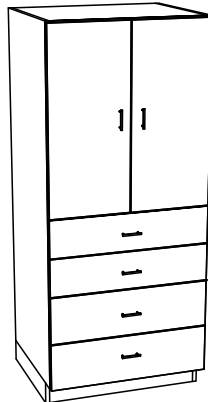
Specify All Dwr Front Heights  
Wardrobe - 2 Door, 3 Dwr

WD2D3DP



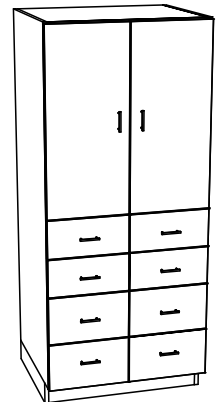
Specify All Dwr Front Heights  
Wardrobe - 2 Door, 3 Dwr Pair

WD2D4D



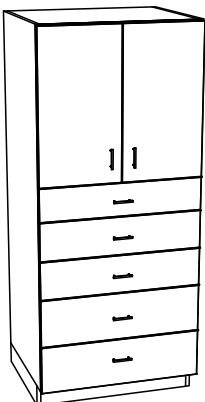
Specify All Dwr Front Heights  
Wardrobe - 2 Door, 4 Dwr

WD2D4DP



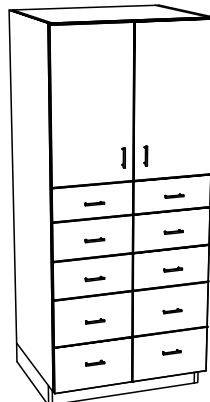
Specify All Dwr Front Heights  
Wardrobe - 2 Door, 4 Dwr Pair

WD2D5D



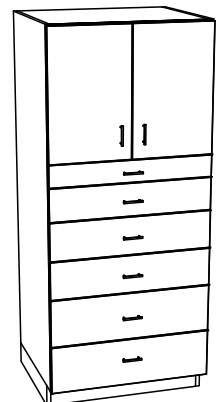
Specify All Dwr Front Heights  
Wardrobe - 2 Door, 5 Dwr

WD2D5DP



Specify All Dwr Front Heights  
Wardrobe - 2 Door, 5 Dwr Pair

WD2D6D

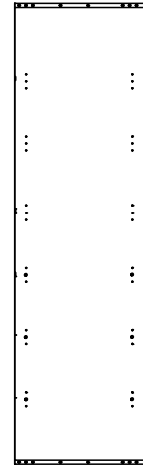


Specify All Dwr Front Heights  
Wardrobe - 2 Door, 6 Dwr

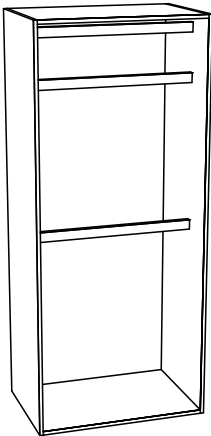


# CLOSET

1. Special line bore drilling (3-hole pattern every 10")
2. Line bore holes can be deleted
3. Closet pole drilling from bottom 40", 70", 80"
4. Closet pole holes can be relocated upon request
5. Closet pole holes can be deleted
6. Closet pole hole pattern can be 2-hole verticle, or 3-hole circle
7. The closet pole distance from inside of back of cabinet can be adjusted
8. Dowel construction only

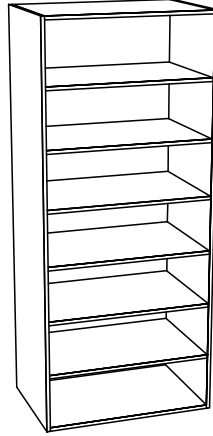


TC0D



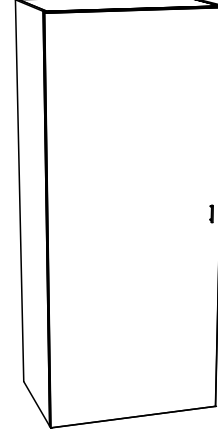
Shown With Closet Poles Only  
Tall Closet - 0 Door

TC0D



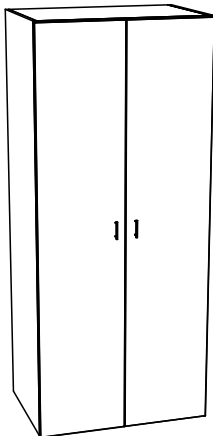
Shown With Adjustable Shelves Only  
Tall Closet - 0 Door

TC1D



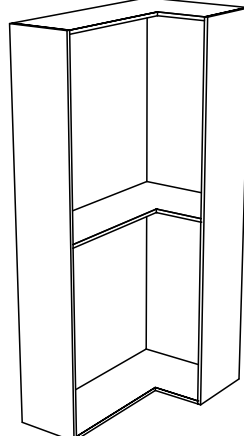
Tall Closet - 1 Door

TC2D



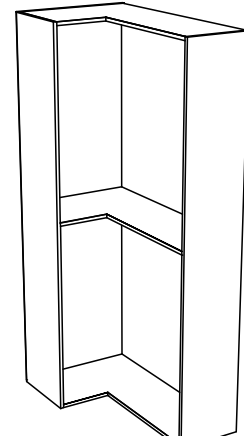
Tall Closet - 2 Door

TC0DPCL



Tall Closet - 0 Door, Pie Cut Left

TC0DPCR

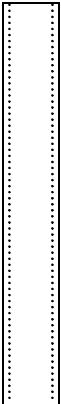
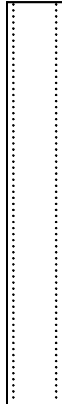
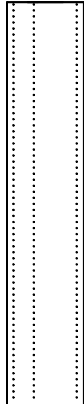
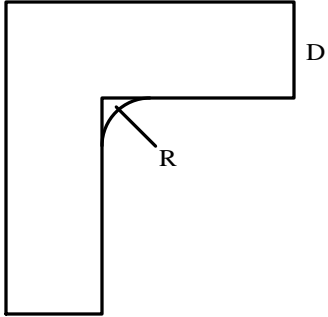
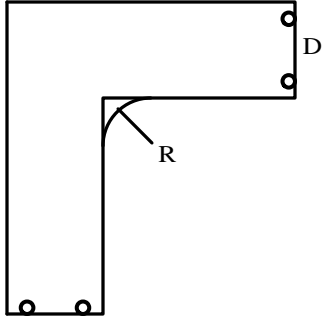
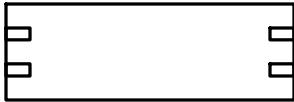
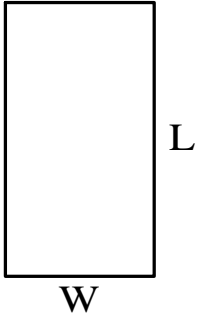
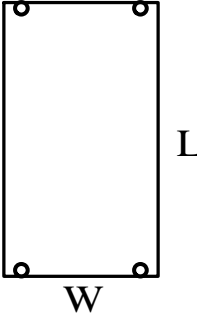
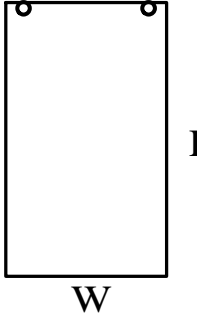


Tall Closet - 0 Door, Pie Cut Right





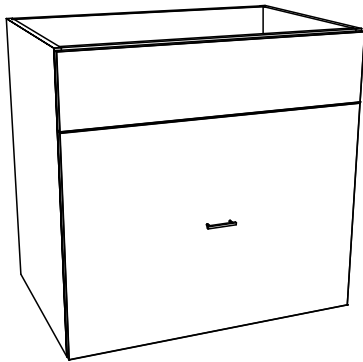
# CLOSET PARTS

<p style="text-align: center;"><b>CE</b></p>  <p>Nailer Drilling Optional</p> <p style="text-align: center;">Closet - End Panel</p>	<p style="text-align: center;"><b>CC</b></p>  <p>Holes are drilled from each side to minimize blow through Nailer Drilling Optional</p> <p style="text-align: center;">Closet - Center Panel</p>	<p style="text-align: center;"><b>CE12 / CC12</b></p>  <p>Drills an additional row of holes to align with a 12" Fixed Shelf / Adj Shelf Nailer Drilling Optional</p> <p style="text-align: center;">Closet - End W-12" LB Add</p>
<p style="text-align: center;"><b>CCAS</b></p>  <p style="text-align: center;">Closet - Corner Adj Shelf</p>	<p style="text-align: center;"><b>CCFS</b></p>  <p style="text-align: center;">Specify Dimensions From Top View</p> <p style="text-align: center;">Closet - Corner Fixed Shelf</p>	<p style="text-align: center;"><b>CN</b></p>  <p style="text-align: center;">Drills 8mm holes for dowels</p> <p style="text-align: center;">Closet - Nailer</p>
<p style="text-align: center;"><b>CAS</b></p>  <p>* Enter size as if shelf were fixed Program deducts 1/16" from the length Program deducts 1/8" from width</p> <p style="text-align: center;">Closet - Adj. Shelf</p>	<p style="text-align: center;"><b>CFS</b></p>  <p>Drills 4 - 20mm holes to align with system holes in side panels</p> <p style="text-align: center;">Closet - Fixed Shelf</p>	<p style="text-align: center;"><b>CFS-E</b></p>  <p>Drill 2 - 20mm holes to align with system holes in side panels, other end can be scribed to wall</p> <p style="text-align: center;">Closet - Fixed Shelf End Scribe</p>



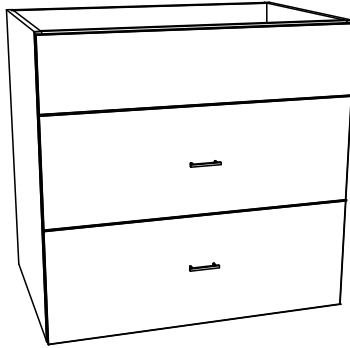
# MISC. CABINETS

CT1D1FD



Specify All Dwr Front Heights  
Cooktop - 1 Drawer, 1 False Dwr

CT2D1FD



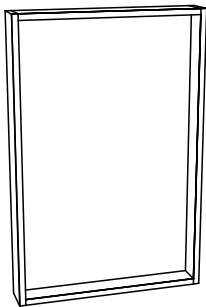
Specify All Dwr Front Heights  
Cooktop - 2 Drawer, 1 False Dwr

CT3D1FD



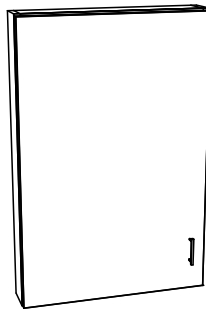
Specify All Dwr Front Heights  
Cooktop - 3 Drawer, 1 False Dwr

MC0D



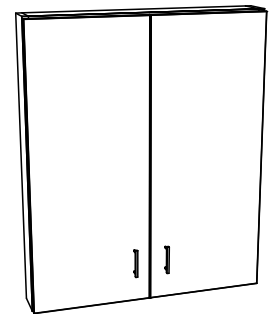
Solid Backs, Line Bore Holes Adjust  
Forward and Back for Shallow Cabinet  
Medicine Cabinet - 0 Door

MC1D



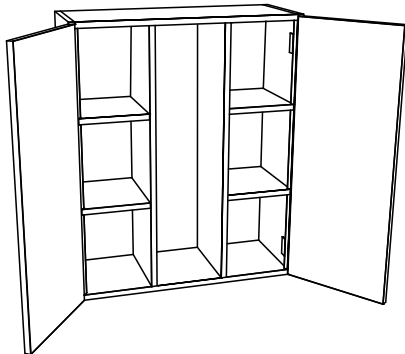
Solid Backs, Line Bore Holes Adjust  
Forward and Back for Shallow Cabinet  
Medicine Cabinet - 1 Door

MC2D



Solid Backs, Line Bore Holes Adjust  
Forward and Back for Shallow Cabinet  
Medicine Cabinet - 2 Door

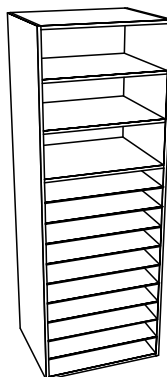
W2DRH



Two Vert Partitions Provide Space For  
Vent Pipe to Pass Through. Specify Center  
Opening, Loose Panel Provided

Wall - 2 Door Range Hood

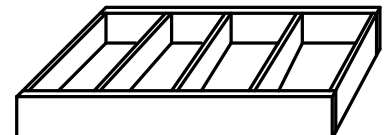
T0DMS



Puts Masonite Shelves in Entire Cabinet  
or Only in Lower Section if Specified

Tall - 0 Door, Masonite Shelves

TOEBASE



Specify Qty of Verticle Ribs  
Specify Qty of Anchor Plates

Toe Base - Frame



# MISC. PARTS

<p>PFF</p> <p>W1</p> <p>L1                      L2</p> <p>W2</p>	<p>PFO</p> <p>W1</p> <p>L1                      L2</p> <p>W2</p>	<p>PMM</p> <p>W1</p> <p>L1                      L2</p> <p>W2</p>
Specify which edges are to be edgebanded Panel - Finish / Finish	Specify which edges are to be edgebanded Panel - Finish / Other	Specify which edges are to be edgebanded Panel - Melamine / Melamine

The panels above can be used for parts such as: Fillers, Toe Fronts, Shelves, Door Panels, etc.

<p>DP</p> <p>Door Panel - Specify Material</p>	<p>DP-G</p> <p>Specify Style and Rail Width</p> <p>Door Panel - Glass Cut Out</p>	<p>DP-G2</p> <p>Specify Style and Rail Width</p> <p>Door Panel - 2 Glass Cut Outs</p>
--	---	---

The door panels above are edgebanded 4 sides  
Specify material face and back: FF, FO, MM, Other

<p>FP-L</p> <p>Supply Drawings - Information Needed: Flute Width, Start and Stop Locations</p> <p>Fluted Panel - Long</p>	<p>FP-W</p> <p>Supply Drawings - Information Needed: Flute Width, Start and Stop Locations</p> <p>Fluted Panel - Wide</p>	<p>BBB / CCC</p> <p>BBB - Front and Back Not Edgebanded CCC - Fronts and Back are Edgebanded</p> <table border="0"> <tr> <td>Standard Heights:</td> <td>1.890"</td> <td>6.929"</td> </tr> <tr> <td></td> <td>2.520"</td> <td>7.559"</td> </tr> <tr> <td></td> <td>3.150"</td> <td>8.189"</td> </tr> <tr> <td></td> <td>3.780"</td> <td>8.819"</td> </tr> <tr> <td></td> <td>4.409"</td> <td>9.449"</td> </tr> <tr> <td></td> <td>5.039"</td> <td>10.079"</td> </tr> <tr> <td></td> <td>5.669"</td> <td>10.709"</td> </tr> <tr> <td></td> <td>6.299"</td> <td>11.339"</td> </tr> </table> <p>BBB - Standard Drawer Box CCC - Roll - Out Drawer Box</p>	Standard Heights:	1.890"	6.929"		2.520"	7.559"		3.150"	8.189"		3.780"	8.819"		4.409"	9.449"		5.039"	10.079"		5.669"	10.709"		6.299"	11.339"
Standard Heights:	1.890"	6.929"																								
	2.520"	7.559"																								
	3.150"	8.189"																								
	3.780"	8.819"																								
	4.409"	9.449"																								
	5.039"	10.079"																								
	5.669"	10.709"																								
	6.299"	11.339"																								